

DH200 (A499)

PARTS CATALOG

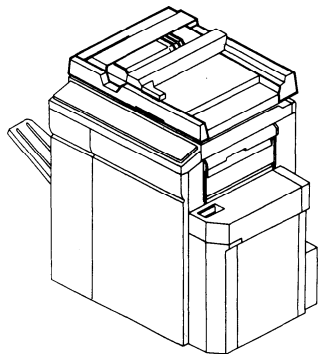
INTRODUCTION

This chapter instructs you the numbers and names of this parts on this machine.

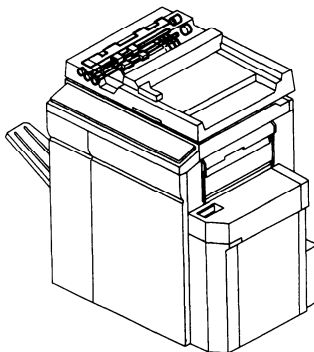
INDEX to PARTS CATALOG

Location of Unit	1	9. Original Table (A499)	20
1. Exterior (A499)	4	10. Frame (A499)	22
2. Feed-in Section (A499)	6	11. Electrical Section (A499)	24
3. Separation (A499)	8	12. Main Board (A499)	26
4. Feed-out Section (A499)	10	13. Main Harness (A499)	28
5. Transport Section (A499)	12	14. interface Harness (A499)	30
6. Invertor Section (A499)	14	15. Exit Harness (A499)	32
7. Exit Section I(A499)	16	16. Decal (A499)	34
8. Exit Section II(A499)	18	Parts Index	38

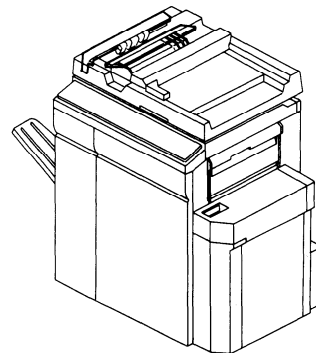
1. EXTERIOR



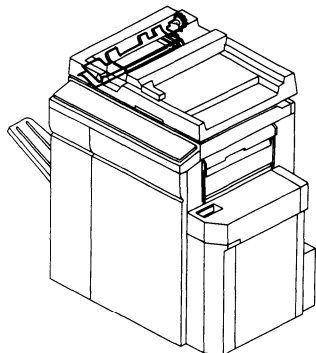
2. FEED-IN SECTION



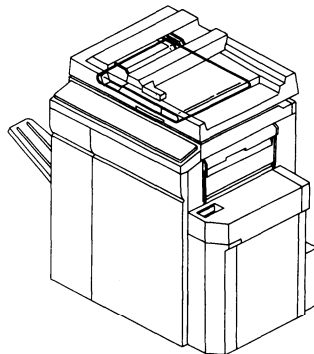
3. SEPARATION



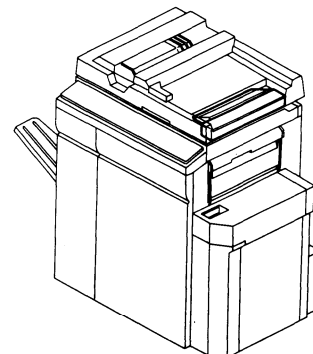
4. FEED-OUT SECTION



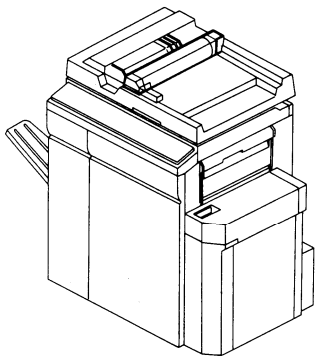
5. TRANSPORT SECTION



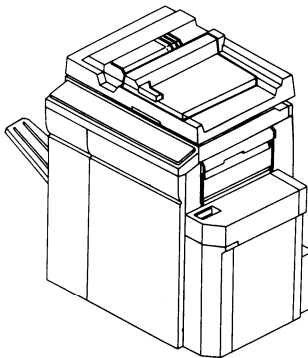
6. INVERTOR SECTION



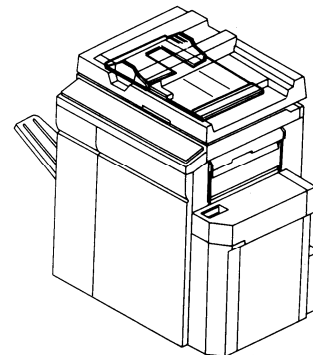
7. EXIT SECTION I



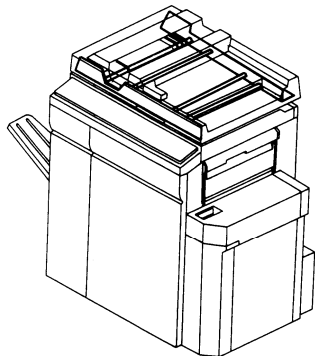
8. EXIT SECTION II



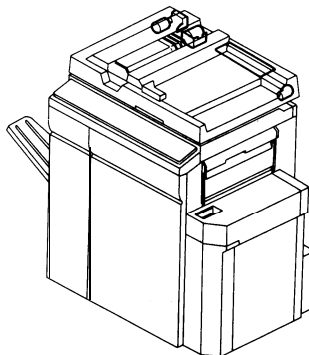
9. ORIGINAL TABLE



10. FRAME

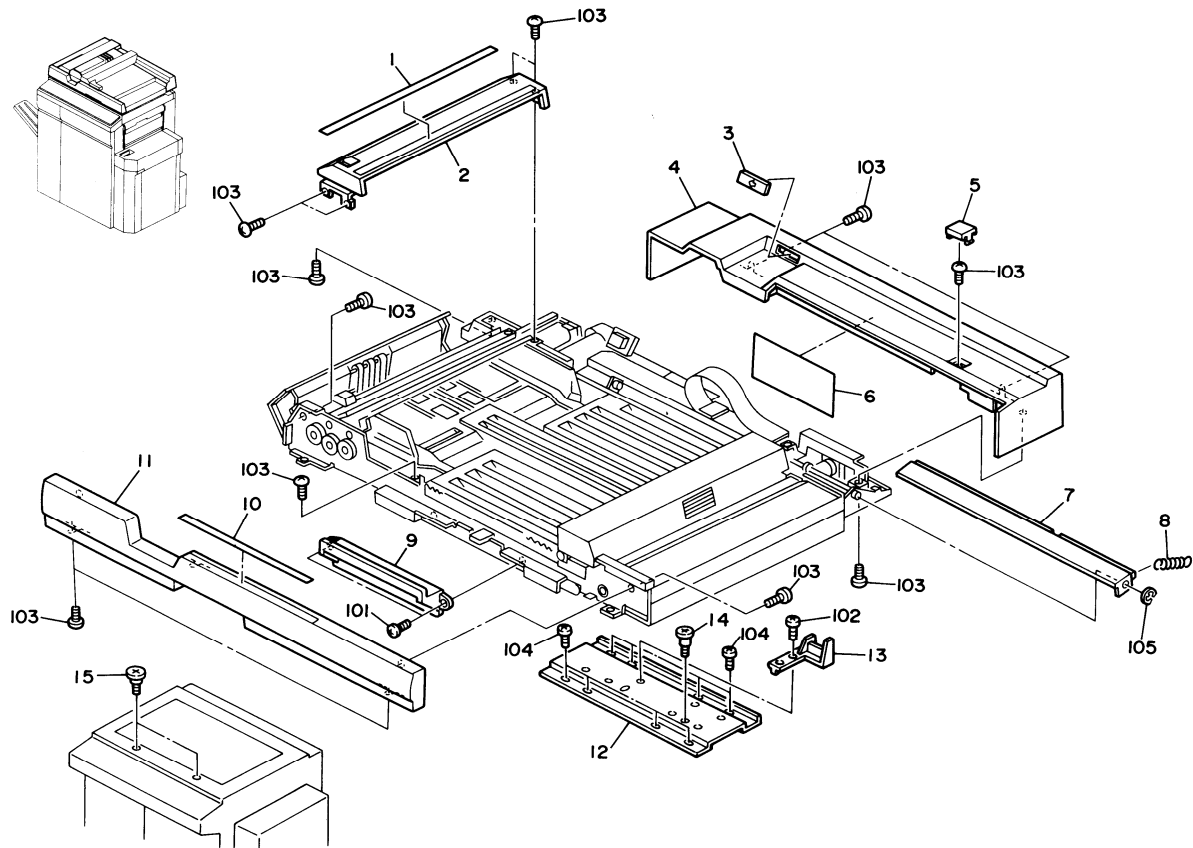


11. ELECTRICAL SECTION



1. EXTERIOR (A499)

October 5, '90



1. EXTERIOR (A499)

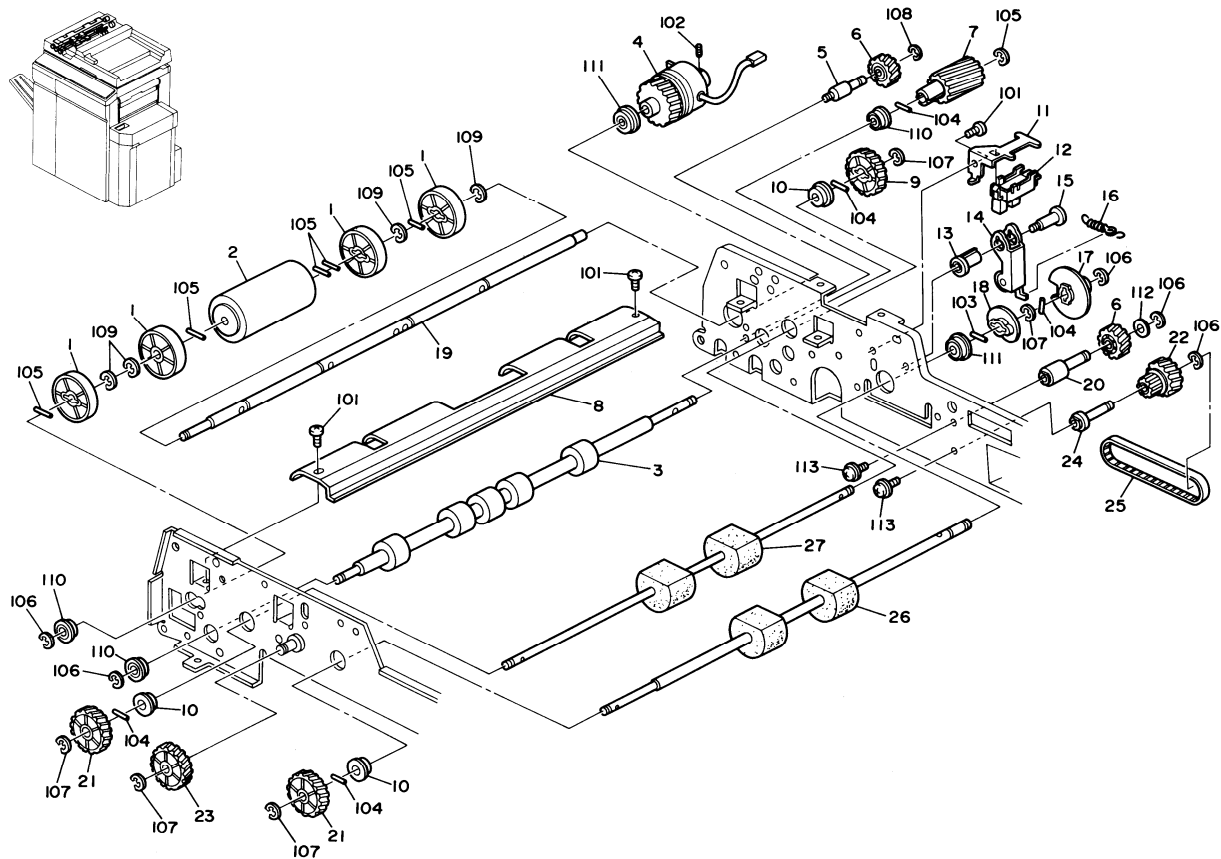
October 5,'90

Index No.	Part No.	Description	Q'ty Per Assembly
1	A499 6012	Decal - Side Fence - LT	1
1	A499 6013	Decal - Side Fence - A4	1
2	A499 3561	Right Upper Cover	1
3	A499 3531	Indication Panel	1
4	A499 3511	Rear Cover	1
5	A499 3521	Cap - Rear Cover	1
6	A499 6026	Decal - DIP Switch	1
7	A499 3591	Slide Support Cover	1
8	AA06 0285	Spring - Cover - Open And Close	1
9	A499 3621	Grip - Magnet Catch	1
10	A499 3606	seal	1
11	A499 3541	Front Cover	1
12	A499 4112	Hinge Plate	1
13	A499 4116	Safety Switch Lever	1
14	AA14 0315	Stepped Screw	2
15	AA14 3097	Stepped Screw - M5	2

Index No.	Part No.	Description	Q'ty Per Assembly
101	0314 0060W	Philips Pan Head Screw - M4x6	
102	0314 0080W	Philips Pan Head Screw - M4x8	
103	0344 0060F	Philips Truss Head Screw - M4x6	
104	0354 0100W	Philips Pan Head Screw - M4x10	
105	0720 0025E	Retaining Ring - M2.5	

2. FEED-IN SECTION (A499)

October 5, '90



2. FEED-IN SECTION (A499)

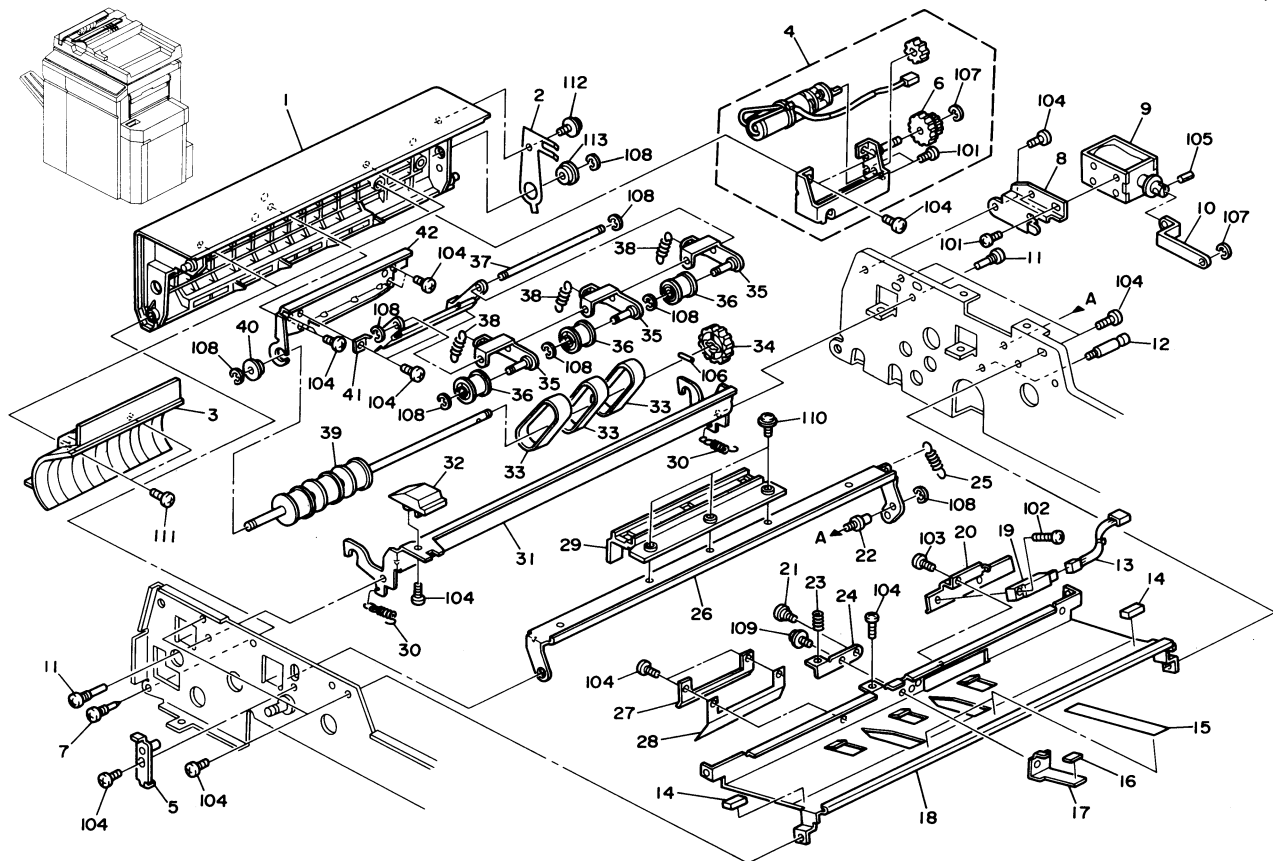
October 5,'90

Index No.	Part No.	Description	Q'ty Per Assembly
1	A499 1212	Guide Roller	4
2	A499 1211	Separation Roller	1
3	AF02 0161	Feed-out Roller	1
4	AX04 0037	Magnetic Clutch	1
5	A499 1415	Stud - M4x5	1
6	AB01 1086	Gear - 20Z	2
7	AB01 1090	Gear - 20Z	1
8	A499 1224	Inner Separation Guide	1
9	AB01 1091	Gear - 30Z	1
10	A422 1078	Bushing - 6x12x4mm	3
11	A499 1467	Positioning Sensor Bracket	1
12	5216 5245	Photointerruptor - IL-G-3P-S3T2-E	1
13	A499 1465	Bushing - 5M	1
14	A499 1461	Cam Lever	1
15	A499 1464	Stepped Screw - M4	1
16	AA06 0279	Pressure Spring	1
17	5936 1145	Position Encoder	1
18	A499 1458	Pick-up Roller Cam	1
19	A499 1215	Separation Drive Shaft	1
20	A499 1816	Stud - Gear 20Z	1
21	AB01 1093	Gear - 35Z	2
22	AB03 0208	Pulley 16/22Z	1
23	AB01 1092	Gear - 35Z	1
24	A499 1813	Stud - Gear 16/22Z	1
25	AB04 3005	Timing Belt - 225XL	1
26	AF02 3002	1st Pick-up Roller	1
27	AF02 3003	2nd Pick-up Roller	1

Index No.	Part No.	Description	Q'ty Per Assembly
101	0314 0060W	Philips Pan Head Screw - M4x6	
102	0574 0040E	Hexagon Headless Set Screw - M4x4	
103	0632 0100E	Pin - M2x10	
104	0632 0120E	Spring Pin -2 x 12mm	
105	0632 0160E	Parallel Pin - M2x16	
106	0720 0040E	Retaining Ring - M4	
107	0720 0050E	Retaining Ring - M5	
108	0720 0060E	Retaining Ring - M6	
109	0720 0070E	Retaining Ring - M7	
110	0741 3506	Ball Bearing - 6x12x4mm	
111	0805 3291	Ball Bearing - 8x16x5mm	
112	0807 4118	Flat Washer	
113	0951 3010W	Philips Screw with flat Washer - M3x10	

3. SEPARATION (A499)

October 5, '90



3. SEPARATION (A499)

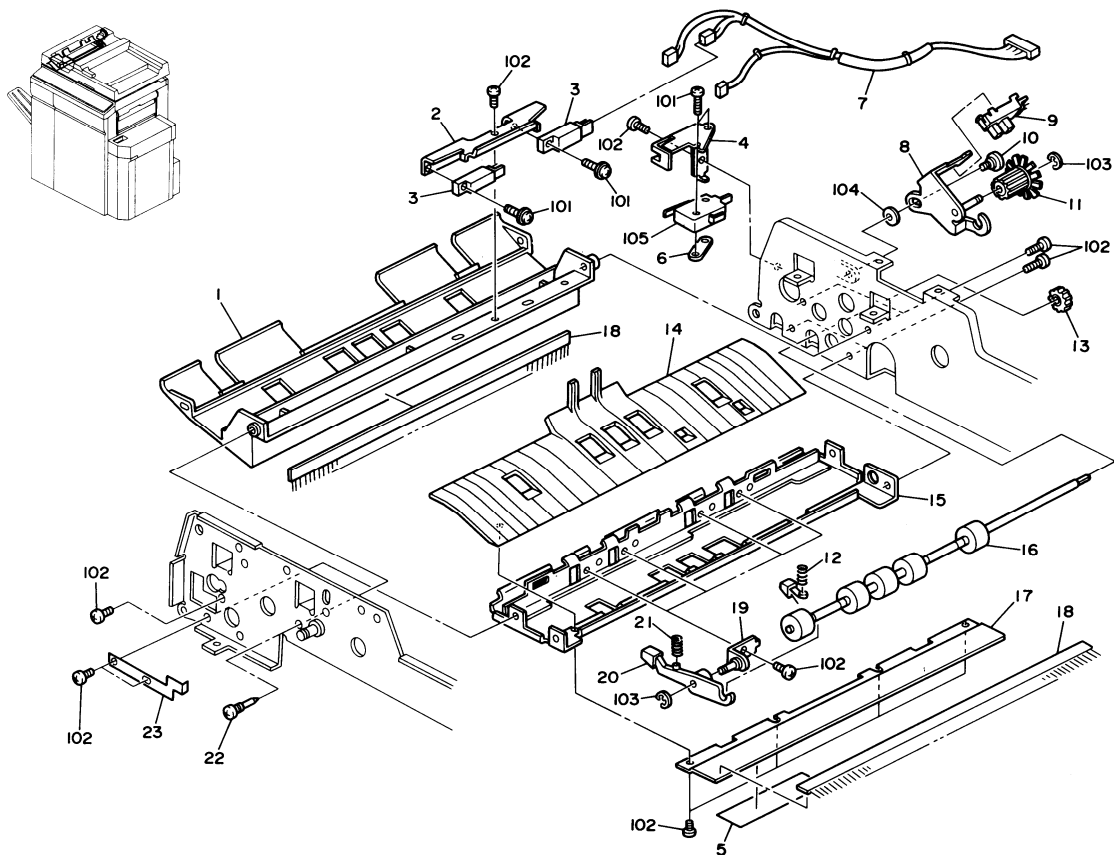
October 5, '90

Index No.	Part No.	Description	Q'ty Per Assembly
1	A499 1111	Left Cover	1
2	A499 1153	Grounding Plate	1
3	A499 1126	Separation Guide	2
4	A499 1120	Separation Belt Holder	1
5	A499 1326	Holder - Original Stopper Bracket	1
6	AB01 0049	Gear - 31Z	1
7	5446 2824	Screw - Duplex Guide Plate	3
8	A499 1331	Stopper Solenoid Bracket	1
9	A028 5876	Original Stopper Solenoid	1
10	A499 1332	Stopper Solenoid Lever	1
11	5415 4145	stud	2
12	5403 1910	Spring Anchor - Stopper Lever	1
13	A499 5703	Harness - Original Sensor	1
14	A499 1314	Cushion - 5x10X20	2
15	A499 1317	Guide Seal	2
16	AA16 1022	Cushion	1
17	A499 1335	Stopper	1
18	A499 1311	Original Entrance Guide	1
19	A010 5700	Sensor	1
20	A499 1315	Original Sensor Bracket	1
21	H006 2171	Exit Stepped Screw	1
22	A499 1325	Stud - M4x5	1
23	AA06 3155	Adjusting Spring	1
24	A499 1336	Stopper Positioning Plate	1
25	AA06 0277	Release Spring	1
26	A499 1321	Original Stopper Bracket	1
27	A499 1312	Separation Guide Bracket	1
28	A499 1313	Paper Guide Mylar	1
29	A499 1323	Original Stopper	1
30	AA06 0278	Release Spring	2
31	A499 1341	Release Lever - Separation Unit	1
32	A499 1346	Knob - Release Lever	1
33	A499 1121	Separation Belt	3
34	AB01 0050	Gear - 32Z	1
35	A499 1131	Tension Roller Holder	3

Index No.	Part No.	Description	Q'ty Per Assembly
36	A499 1135	Tension Roller	3
37	A499 1129	Shaft - Tension Roller Holder	1
38	AA06 0276	Spring	3
39	AF02 0167	Drive Roller Separation Belt	1
40	A422 1078	Bushing - 6x12x4mm	1
41	A499 1122	Shaft Holder	1
42	A499 1123	Left Cover Bracket	1
101	0040W	Philips Pan Head Screw - M3x4	
102	0060M	Philips Pan Head Screw - M3x6	
103	0313 0060W	Philips Pan Head Screw - M3x6	
104	0314 0060W	Philips Pan Head Screw - M4x6	
105	0623 0100E	Spring Pin - 3x10mm	
106	0632 0100E	Pin - M2x10	
107	0720 0030E	Retaining Ring - M3	
108	0720 0040E	Retaining Ring - M4	
109	0801 1193W	Philips Truss Head Screw - M4x8	
110	0951 3006W	Philips Screw with Flat Washer - M3x6	
111	0951 4006W	Philips Screw With Flat Washer - M4x6	
112	0965 4006W	Tapping Screw - M4 x 6	
113	0741 3506	Ball Bearing - 6x12x4 mm	

4. FEED-OUT SECTION (A499)

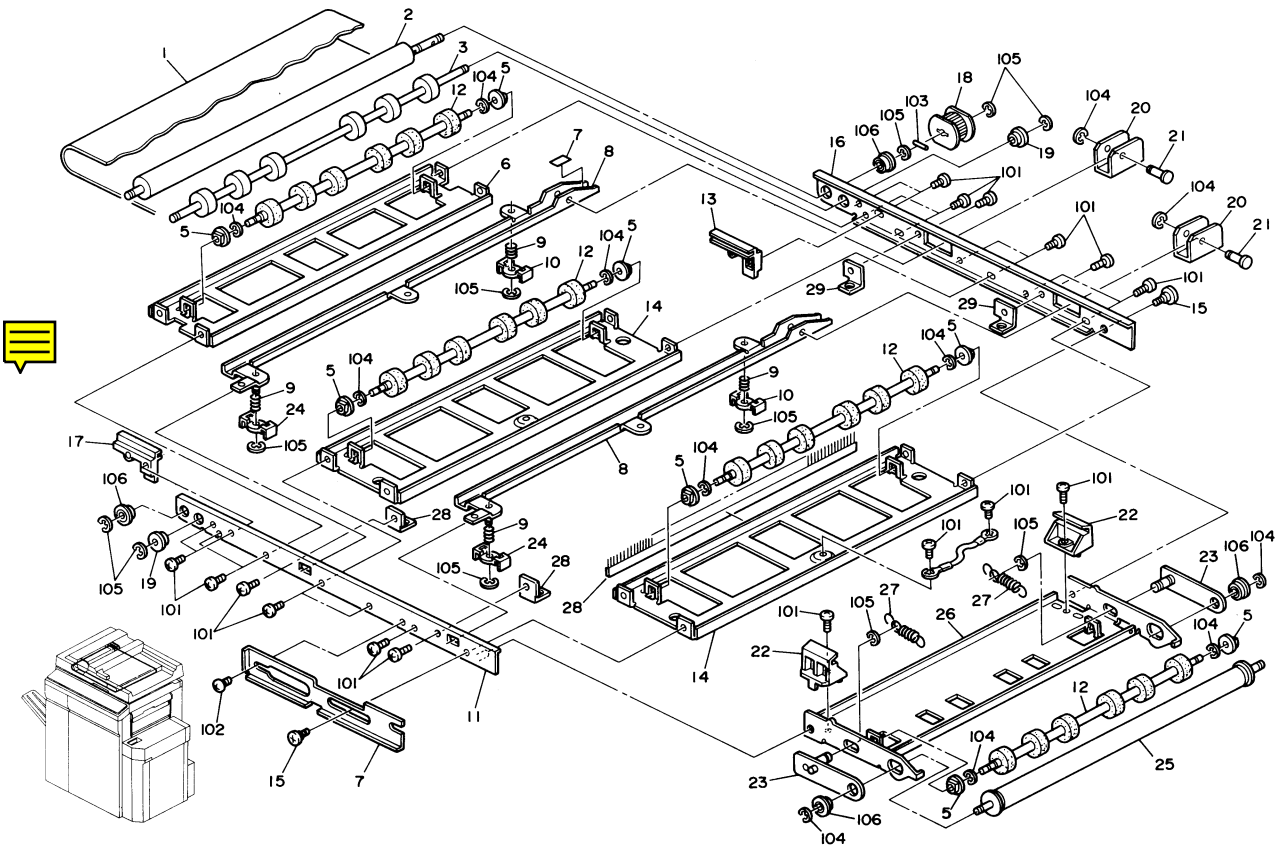
October 5, '90



4. FEED-OUT SECTION (A499)

Index No.	Part No.	Description	Q'ty Per Assembly
1	A499 1272	Upper Feed Out Guide	1
2	A499 1274	Register Sensor Bracket	1
3	A422 5270	Photosensor	2
4	A499 3142	Switch Bracket - Separation	1
5	A499 1379	Sensor Pad	1
6	5056 0509	Nut Plate - Microswitch	1
7	A499 5702	Registration Sensor Harness	1
8	A499 1371	Pulse Generator Bracket	1
9	5216 5245	Photointerruptor - IL-G-3P-S3T2-E	1
10	A499 1378	Stepped Screw - M4x6	1
11	A499 1375	Pulse Generator	1
12	AA06 3151	Inner Pressure Spring	2
13	AB01 0051	Gear - 26Z	1
14	A499 1358	Lower Feed Out Guide	1
15	A499 1351	Original Feed Out Stay	1
16	A499 1355	Idle Roller	1
17	A499 1356	Sensor Pad Plate	1
18	AA12 0032	Antistatic Brush	2
19	A499 1361	Bracket - Idle Roller Arm	4
20	A499 1365	Idle Roller Arm	4
21	AA06 3152	Outer Pressure Spring	2
22	5446 2824	Screw - Duplex Guide Plate	1
23	A499 1275	Grounding Plate	1

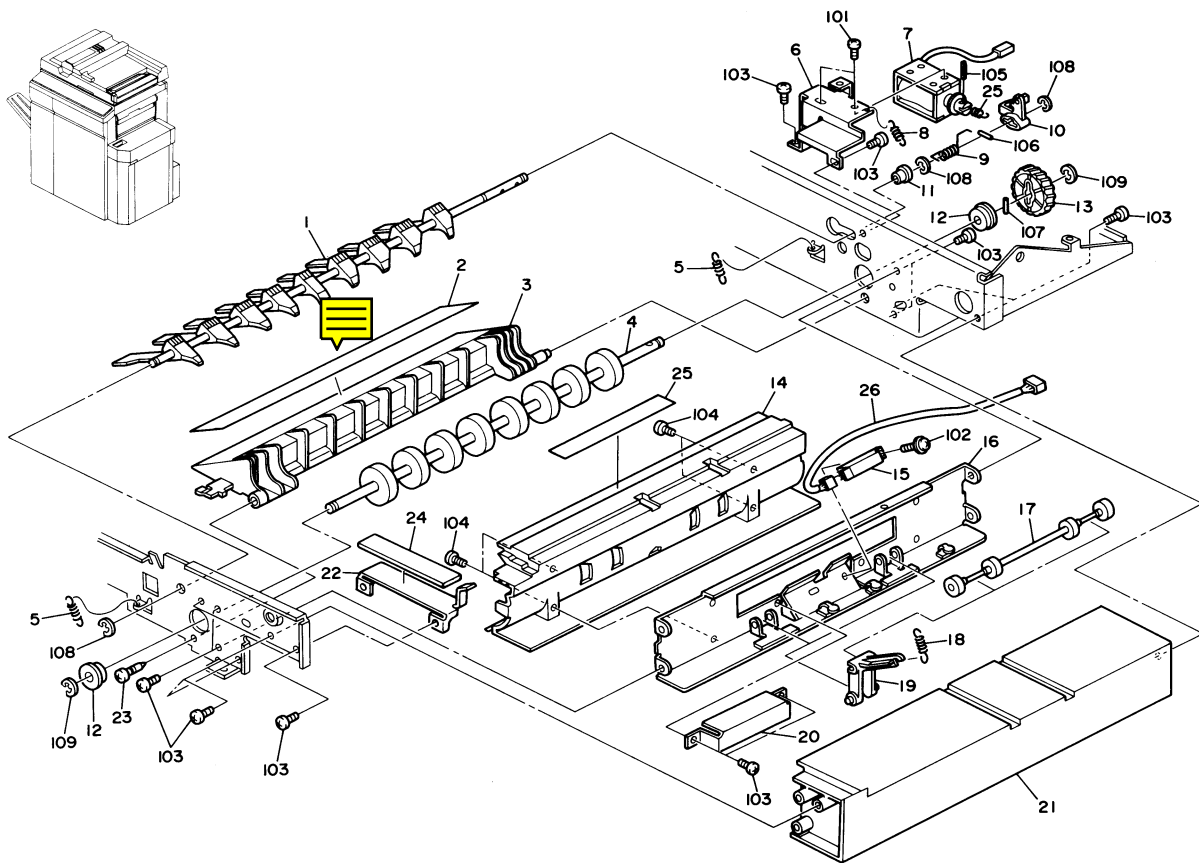
Index No.	Part No.	Description	Q'ty Per Assembly
101	0313 0160B	Phillips Pan Head Screw - M3x16	
102	0314 0060W	Phillips Pan Head Screw - M4x6	
103	0720 0030E	Retaining Ring - M3	
104	0807 4111	Washer - 5.2x14x0.1mm	
105	1204 1123	Microswitch	



5. TRANSPORT SECTION (A499)

Index No.	Part No.	Description	Q'ty Per Assembly,
1	A497 1125	Transport Belt	1
2	AF02 0162	Belt Drive Roller	1
3	AF02 0163	Belt Pressure Roller	1
4	A499 5707	Grounding Wire	1
5	A499 1616	Bushing - 4M	8
6	A499 1531	Left Stay	1
7	A499 1581	Support Plate - Release Bracket	1
8	A499 1545	Belt Unit Arm	2
9	AA06 3153	Pressure Spring	4
10	A499 1552	Bushing - 6M	2
11	A499 1511	Front Frame - Transport Belt	1
12	AF02 3001	Belt Support Roller	4
13	A499 1537	Belt Guide - Front Right	1
14	A499 1532	Middle Stay	2
15	AA14 3062	Shoulder Screw - M4	2
16	A499 1522	Rear Frame - Transport Belt	1
17	A499 1536	Belt Guide - Front Left	1
18	AB03 0236	Pulley -212	1
19	A422 1078	Bushing - 6x12x4mm	2
20	A499 1542	Belt Unit Hinge	2
21	A499 1556	Pin - 4x16	2
22	A499 1576	Right Belt Guide	2
23	A499 1571	Tension Plate	2
24	A499 1551	Bushing - 6M	2
25	AF02 1020	Drive Roller	1
26	A499 1561	Belt Release Bracket	1
27	AA06 0286	Tension Spring	2
28	AA12 0032	Antistatic Brush	1
29	AA99 1513	Front Pressure Plate	2
30	AA99 1523	Rear Pressure Plate	2

Index No.	Part No.	Description	Q'ty Per Assembly
101	0314 0060W	Philips Pan Head Screw - M4x6	
102	0344 0060F	Philips Truss Head Screw - M4x6	
103	0632 0120E	Spring Pin -2 x 12mm	
104	0720 0030E	Retaining Ring - M3	
105	0720 0040E	Retaining Ring - M4	
106	0741 3506	Ball Bearing - 6x12x4 mm	



6. INVERTOR SECTION (A499)

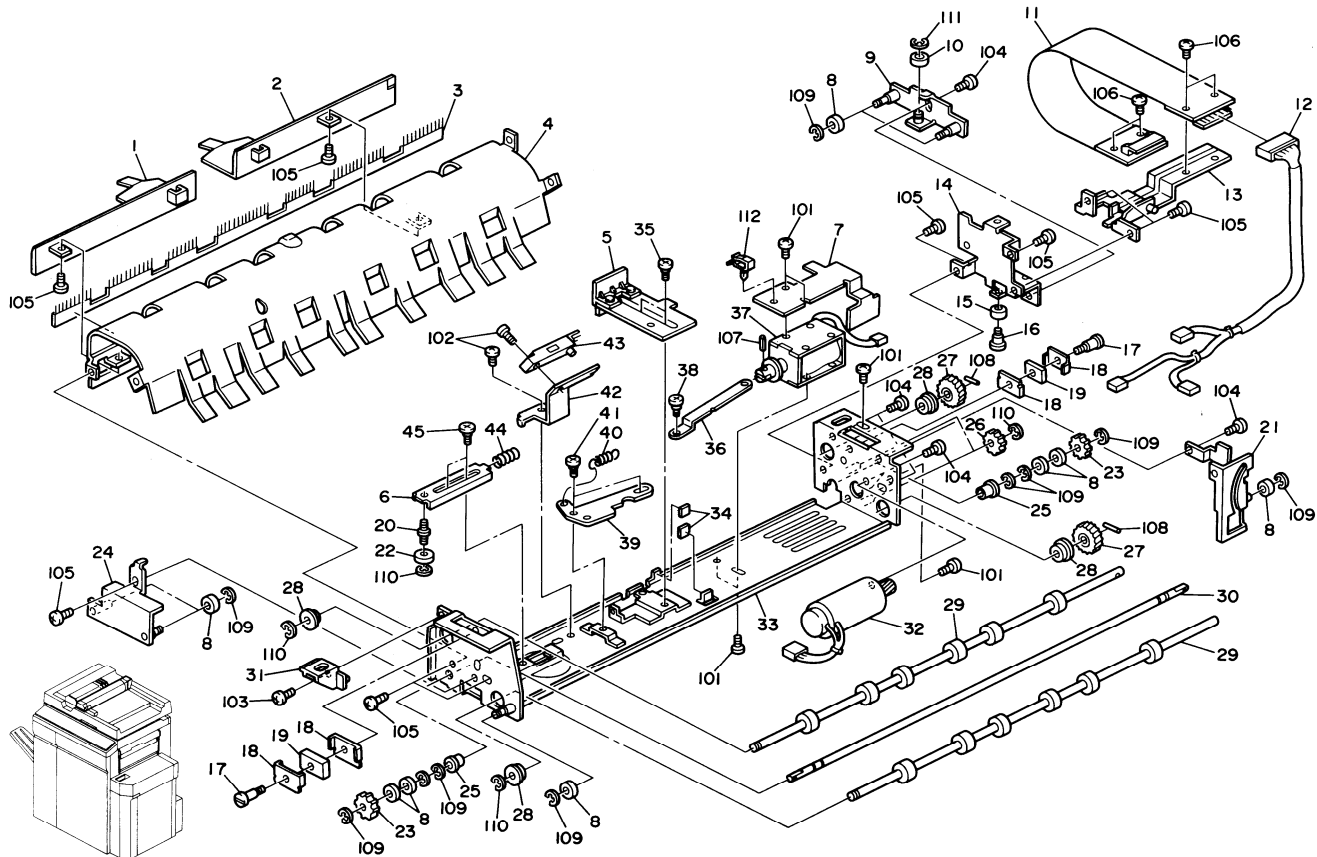
October 5,'90

Index No.	Part No.	Description	Q'ty Per Assembly
1	A499 1751	Invertor Pawls	1
2	A497 2024	Paper Guide Mylar	1
3	A499 1711	Invertor Guide Plate	1
4	AF02 0164	Invertor Roller	1
5	AA06 0280	Spring - Invertor Guide	2
6	A499 1761	Invertor Solenoid Bracket	1
7	A028 5876	Original Stopper Solenoid	1
8	AA06 0287	Spring - Invertor Lever	1
9	AA06 6054	Spring	1
10	A499 1752	Invertor Lever	1
11	H014 3107	Bushing - Locking Lever	1
12	A422 1079	Bushing - 8x16x5mm	2
13	AB01 1098	Gear - 35Z	1
14	A499 1721	Invertor Guide	1
15	A422 5270	Photosensor	1
16	A499 1735	Invertor Stay	1
17	AF02 2046	Idle Roller	1
18	AA06 0282	Pressure Spring	2
19	A499 1731	Idle Roller Arm	2
20	A499 1738	Invertor Sensor Cover	1
21	A499 3551	Right Cover	1
22	A499 2395	Magnet Holder	1
23	5446 2824	Screw - Duplex Guide Plate	1
24	A499 2396	Magnet	1
25	A499 1746	Mylar - 128x18	1
26	A499 5708	Harness - Invertor Sensor	1
27	AA06 0283	Spring - Invertor Solenoid	1

Index No.	Part No.	Description	Q'ty Per Assembly
101	0313 0040W	Philips Pan Head Screw - M3x4	
102	0313 0160B	Philips Pan Head Screw - M3x16	
103	0314 0060W	Philips Pan Head Screw - M4x6	
104	0354 0080W	Philips Pan Head Screw - M4x8	
105	0623 0100E	Spring Pin - 3x10mm	
106	0632 0100E	Pin - M2x10	
107	0632 0140E	Parallel Pin - M2x14	
108	0720 0040E	Retaining Ring - M4	
109	0720 0060E	Retaining Ring - M6	

7. EXIT SECTION I (A499)

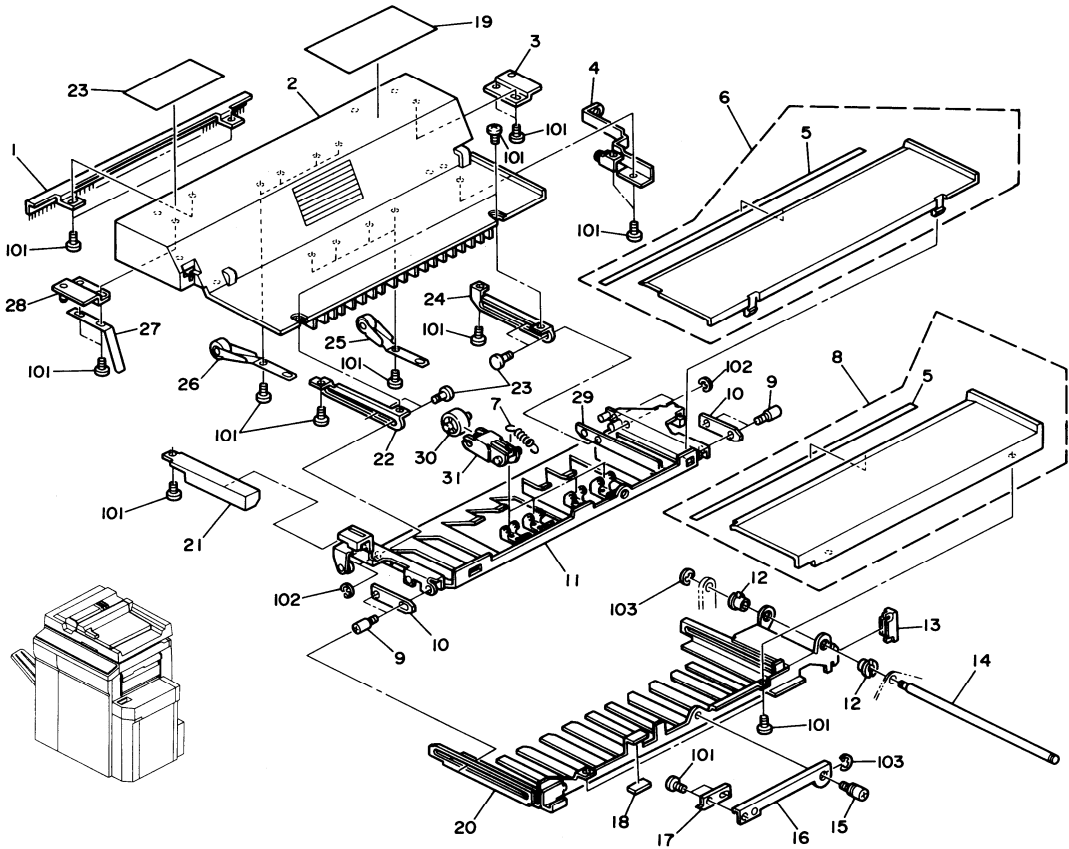
October 5, '90



7. EXIT SECTION I (A499)

Index No.	Part No.	Description	Q'ty Per Assembly
1	A499 2201	Front End Fence	1
2	A499 2211	Rear End Fence	1
3	AA12 0031	Antistatic Brush	1
4	A499 2198	Invertor Guide Plate	1
5	A499 2131	End Fence - Center	1
6	A499 2121	Slider Lock	1
7	A499 2246	Harness Cover	1
8	A499 2181	Fixing Roller	10
9	A499 2161	Rear Fixing Plate	1
10	A454 1172	Collar - M6	1
11	A499 5501	Slider Harness	1
12	A499 5704	Exit Harness	1
13	A499 2166	Exit Harness Holder	1
14	A499 2156	Slider Guide	1
15	5866 1728	Collar -6.1 mm	1
16	AA14 3286	Stepped Screw - M4	1
17	AA14 3284	Stepped Screw - M3x11	2
18	A499 2177	Magnet Holder	4
19	A499 2176	Exit Cover Magnet	2
20	AA14 3283	Stud - M4	1
21	A499 2171	Guide Bracket	1
22	A499 2183	Locking Roller	1
23	A499 2189	Gear - 28Z	2
24	A499 2151	Front Fixing Plate	1
25	AA08 0004	Bushing - 4x6x5	2
26	AB01 0052	Gear - 28Z	2
27	AB01 0053	Gear - 35Z	2
28	A422 1078	Bushing - 6x12x4mm	4
29	AF02 0165	Exit Roller	2
30	A499 2191	Slider Pinion Shaft	1
31	A499 2241	Positioning Holder	1
32	A409 1234	Exit Motor -DC 9W	1
33	A499 2111	Exit Frame	1
34	AA16 1022	Cushion	2
35	H006 2171	Exit Stepped Screw	2

Index No.	Part No.	Description	Q'ty Per Assembly
36	A499 2141	End Fence Link	1
37	A028 5876	Original Stopper Solenoid	1
38	AA14 3284	Stepped Screw - M3x11	1
39	A499 2142	End Fence Lever	1
40	AA06 0284	Spring - Pick-up	1
41	AA14 0065	Stepped Screw - M3x6	1
42	A499 2146	Exit Screw Bracket	1
43	A422 5270	Photosensor	1
44	AA06 3154	Spring - Lock	1
45	AA14 0060	Stepped Screw - M3x5	2
101	0313 0040W	Philips Pan Head Screw - M3x4	
102	0313 0060W	Philips Pan Head Screw - M3x6	
103	0313 0160W	Philips Pan Head Screw - M3x16	
104	0314 0040W	Philips Pan Head Screw - M4x4	
105	0314 0060W	Philips Pan Head Screw - M4x6	
106	0344 0060W	Philips Truss Head Screw - M4x6	
107	0623 0100E	Spring Pin - 3x10mm	
108	0632 0120E	Spring Pin -2 x 12mm	
109	0720 0025E	Retaining Ring - M2.5	
110	0720 0030E	Retaining Ring - M3	
111	0720 0040E	Retaining Ring - M4	
112	1105 0283	Clamp	



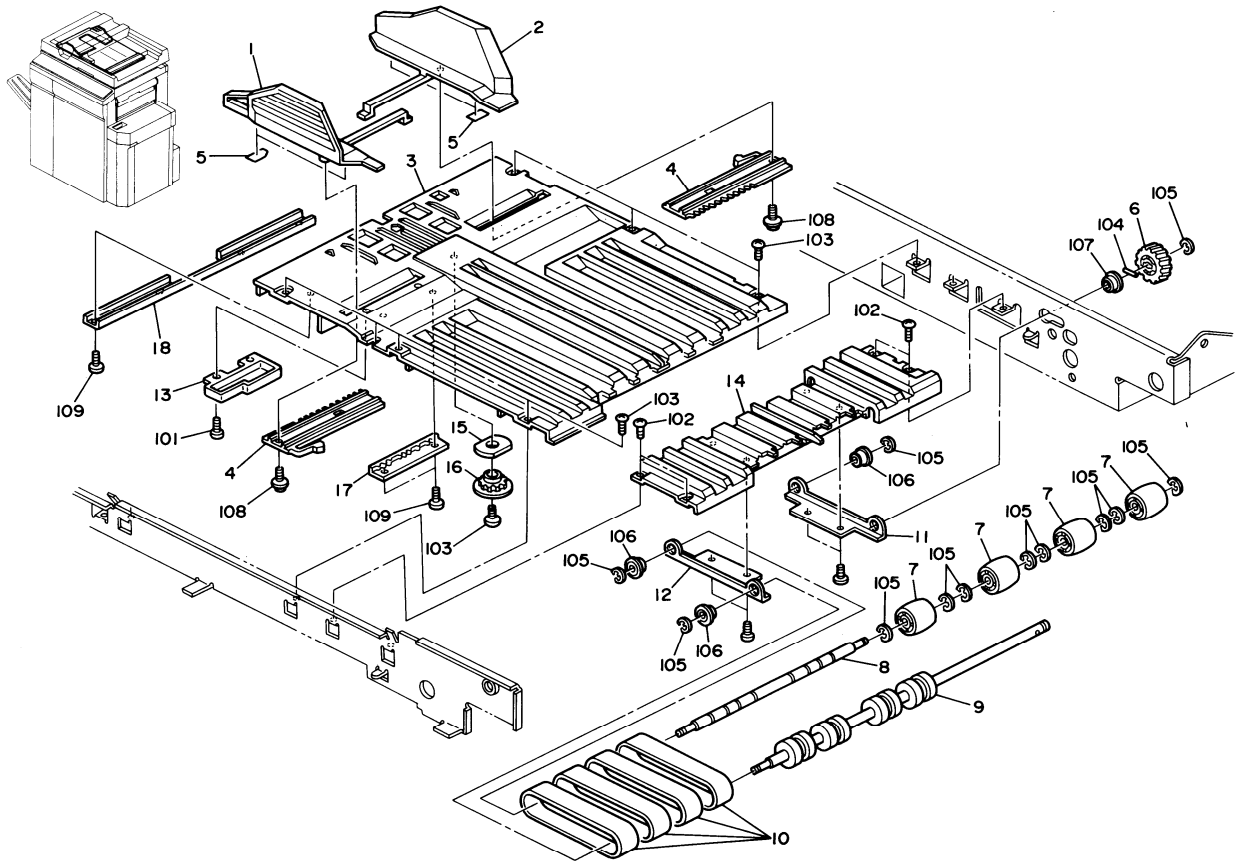
8. EXIT SECTION II (A499)

Index No.	Part No.	Description	Q'ty Per Assembly
1	A499 2338	Antistatic Brush Plate	1
2	A499 2301	Slider Cover	1
3	A499 2317	Rear Positioning Plate	1
4	A499 2331	Slider Hinge	1
5	A499 3606	seal	2
6	A499 3720	Middle Slide Cover	1
7	AA06 0259	Spring - Middle Roller	4
8	A499 3730	Right Slide Cover	1
9	A499 2389	Slider Guide Screw	4
10	A499 2388	Right Guide Spacer	2
11	A499 2352	Middle Guide Plate	1
12	A499 2377	Bushing - 6M	2
13	A499 2391	Actuator	1
14	A499 2378	Shaft - Guide - Slide	1
15	A499 2401	Lock Arm Pin	1
16	A499 2402	Slider Lock Arm	1
17	A499 2403	Slider Lock Lever	1
18	5215 3072	Side Magnet	1
19	A499 6022	Decal - Misfeed Removal	1
20	A499 2381	Right Guide Plate	1
21	A499 3651	Slider Grip	1
22	A499 2346	Front Slide Rail	1
23	A499 6018	Decal - Set Original	1
24	A499 2347	Rear Slide Rail	1
25	A499 2321	Exit Guide Roller - Right	4
26	A499 2326	Exit Guide Roller - Left	4
27	A499 2341	Exit Grounding Plate	1
28	A499 2313	Front Positioning Plate	1
29	A499 2379	Middle Guide Spacer	1
30	A499 2444	Middle Belt Roller	4
31	A499 2445	Holder - Middle Belt Roller	4

Index No.	Part No.	Description	Q'ty Per Assembly
101	0314 0060W	Phillips Pan Head Screw - M4x6	
102	0720 0030E	Retaining Ring - M3	
103	0720 0040E	Retaining Ring - M4	

9. ORIGINAL TABLE (A499)

October 5, '90



9. ORIGINAL TABLE (A499)

Index No.	Part No.	Description	Q'ty Per Assembly
1	A499 1251	Front Side Fence	1
2	A499 1261	Rear Side Fence	1
3	A499 1231	Original Table	1
4	A499 1237	Side Fence Gear	2
5	A499 1246	Guide Seal - 1x8x16mm	4
6	AB01 1099	Gear - 20Z	1
7	A499 2427	Idle Roller	4
8	A499 2426	Idle Roller Shaft	1
9	AF02 0166	Belt Drive Roller - Right Table	1
10	A499 2431	Transport Belt - Right Table	4
11	A499 2422	Rear Stay - Right Table	1
12	A499 2421	Front Stay - Right Table	1
13	A499 1242	Original Table Cop	1
14	A499 2411	Right Table	1
15	5443 2712	Cork Pad	1
16	A499 1239	Gear - 20Z	1
17	A499 1238	Side Fence Guide Rail	1
18	A499 1236	Original Table Support Plate	1

Index No.	Part No.	Description	Q'ty Per Assembly
101	0314 0060W	Philips Pan Head Screw - M4x6	
102	0344 0060F	Philips Truss Head Screw - M4x6	
103	0344 0060W	Philips Truss Head Screw - M4x6	
104	0632 0120E	Spring Pin -2 x 12mm	
105	0720 0040E	Retaining Ring - M4	
106	0741 3505	Ball Bearing-5x10x4mm	
107	0741 3506	Ball Bearing - 6x12x4 mm	
108	0951 3006W	Philips Screw with Flat Washer - M3x6	
109	0951 4006W	Philips Screw With flat Washer - M4x6	

10. FRAME (A499)

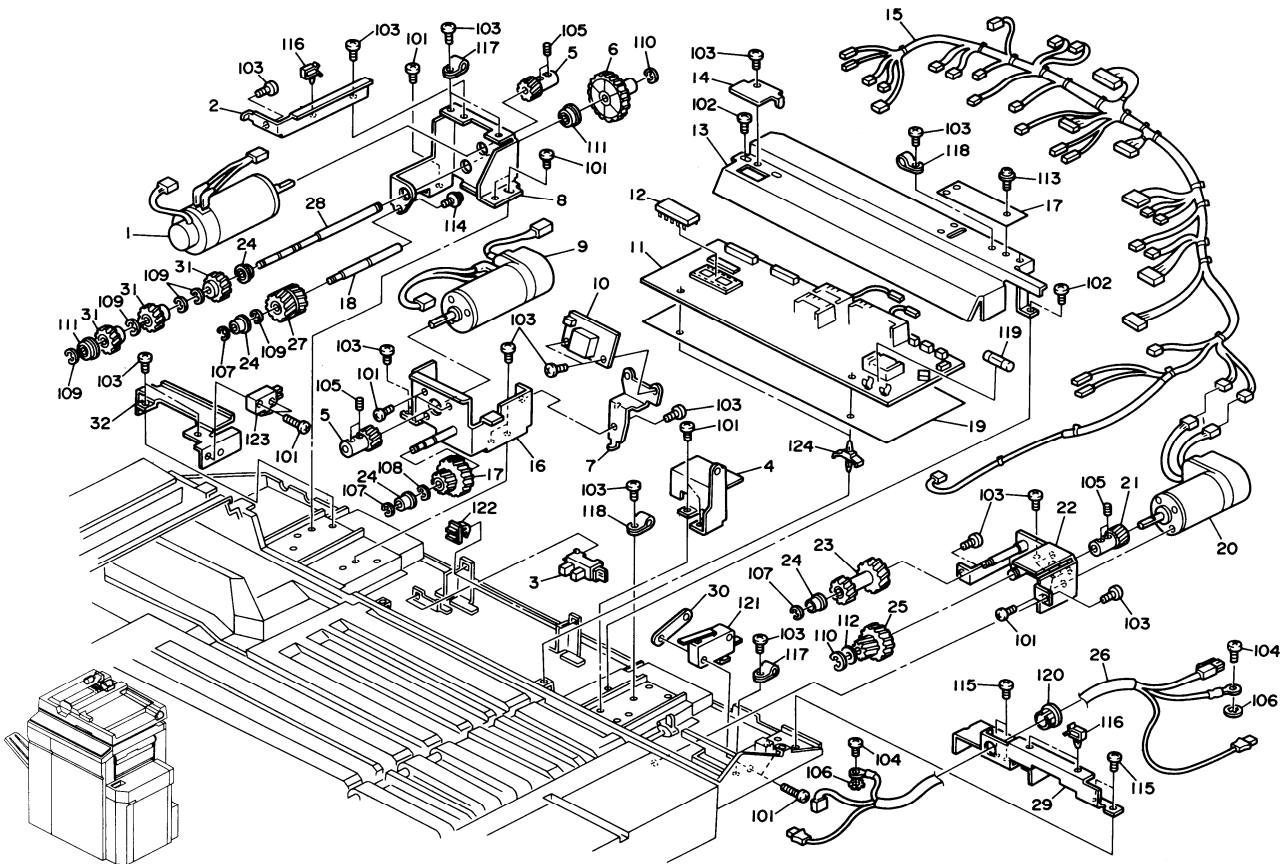
October 5,'90

Index No.	Part No.	Description	Q'ty Per Assembly
1	A010 5700	Sensor	1
2	A499 1277	Original Set Sensor Bracket	1
3	A499 3135	Right Stay	1
5	A499 2386	Left Hinge - Support Cover	1
6	A499 2194	Slider Rack	1
7	A499 3147	Actuator - Slider Cover	1
8	A499 3146	Actuator Shaft	1
9	A499 3145	Switch Bracket - Slide Cover	1
10	A499 3186	Right Hinge	1
11	A499 3131	Main Hinge	1
12	A499 1771	Stopper Plate	1
13	A499 1772	Cushion - 44x10x3	1
14	A499 3135	Right Stay	1
15	AA12 0032	Antistatic Brush	1
16	A499 1245	Table Support Bracket	1
17	A499 3111	Front Frame	1
18	A499 3611	Left Magnet Catch Hinge	1
19	A499 3631	Cushion - Magnet Catch	1
20	A499 3635	Magnet Catch Stay	1
21	5936 2480	Magnet Catch Ass'y	1
22	A499 3616	Right Magnet Catch Hinge	1
23	5936 2480	Magnet Catch Ass'y	1
24	A497 1152	Magnet - APS	1
25	A499 2194	Slider Rack	1

Index No.	Part No.	Description	Q'ty Per Assembly
101	0313 0040W	Philips Pan Head Screw - M3x4	
102	0313 0060W	Philips Pan Head Screw - M3x6	
103	0313 0160B	Philips Pan Head Screw - M3x16	
104	0314 0060W	Philips Pan Head Screw - M4x6	
105	0720 0025E	Retaining Ring - M2.5	
106	0720 0030E	Retaining Ring - M3	
107	1105 0009	Nylon Clip - 5N	

11. ELECTRICAL SECTION (A499)

October 5, '90



11. ELECTRICAL SECTION (A499)

October 5,'90

Index No.	Part No.	Description	Q'ty Per Assembly
1	A010 5740	DC Motor	1
2	A499 1451	Motor Support Bracket	1
3	5216 5245	Photointerruptor - IL-G-3P-S3T2-E	1
4	A499 2375	Guide Shaft Bracket	1
5	AB01 1095	Gear - 18Z	2
6	AB01 1087	Gear - 53Z	1
7	A499 3165	Indication Board Bracket	1
8	A499 1422	DC Motor Bracket	1
9	AX06 0027	Drive Motor - DC24V/21W	1
10	A499 5551	Indication Board	1
11	A499 5601	Main Board	1
12	A499 5651	ROM - Main Control	1
13	A499 3156	Main Board Cover	1
14	A499 3157	LED Cover	1
15	A499 5701	Main Harness	1
16	A499 1821	Belt Drive Motor Bracket	1
17	AB01 1094	Gear - 16/31Z	1
18	A499 1434	Idle Gear Shaft	1
19	A499 3167	Board Protect Sheet	1
20	AX06 0032	DC Motor - DC5V 15W	1
21	AB01 0058	Gear - 17Z	1
22	A499 1851	Motor Bracket - Inverter	1
23	AB01 1097	Gear - 22/26Z	1
24	H014 3107	Bushing - Locking Lever	4
25	AB01 0059	Gear - 15/38Z	1
26	A499 5705	Interface - Harness	1
27	AB01 1089	Gear - 20Z	1
28	A499 1433	Shaft - Roller Clutch - Z20	1
29	A499 3161	Right Support Plate	1
30	5056 0509	Nut Plate - Microswitch	1
31	AB01 1100	Gear - 20Z	3
32	A499 3152	Switch Bracket	1

Index No.	Part No.	Description	Q'ty Per Assembly
101	0313 0040W	Philips Pan Head Screw - M3x4	
102	0313 0060M	Philips Pan Head Screw - M3x6	
103	0314 0060W	Philips Pan Head Screw - M4x6	
104	0314 0080M	Philips Pan Head Screw - M5x8	
105	0573 0040E	Hexagon Headless Set Screw - M3x4	
106	0704 0040C	Trothed Washer - M4	
107	0720 0030E	Retaining Ring - M3	
108	0720 0040E	Retaining Ring - M4	
109	0720 0050E	Retaining Ring - M5	
110	0720 0060E	Retaining Ring - M6	
111	0741 3506	Ball Bearing - 6x12x4 mm	
112	0807 4048	Flat Washer - M5	
113	0951 3006W	Philips Screw with Flat Washer - M3x6	
114	0951 4006W	Philips Screw With Flat Washer - M4x6	
115	0957 4008W	Screw - M5x8	
116	1105 0310	Wire Clamp	
117	1105 0009	Nylon Clip - 5N	
118	1105 0016	Nylon Clip - 4N	
119	1107 0459	Fuse - 5A	
120	1106 0411	Bushing -11.5mm	
121	1204 1433	Microswitch	
122	1105 0326	Locking Support	
123	1204 2188	Inter Lock Switch	
124	1105 0192	Locking Support	



CONNECTOR

SYMBOL NO.	INDEX NO.
CN 100	103
CN 101	109
CN 102	104
CN 103	106
CN 104	107
CN 105	105
CN 106	108
CN 107	110

CAPACITOR

SYMBOL NO.	INDEX NO.
C 100	161
C 101	165
C 102	165
C 103	159
C 104	166
C 105	156
C 106	158
C 107	156
C 108	158
C 109	166

SYMBOL NO.	INDEX NO.
C 110	168
C 111	166
C 112	157
C 113	156
C 114	158
C 115	166
C 116	189
C 117	165
C 118	167
C 119	165

SYMBOL NO.	INDEX NO.
C 120	165
C 121	160
C 122	161
C 123	161
C 124	155
C 125	162
C 126	162
C 127	168
C 128	168
C 129	168

SYMBOL NO.	INDEX NO.
C 130	163
C 131	163
C 132	168
C 133	168
C 134	168
C 135	168
C 136	168
C 137	168
C 138	168
C 139	168

SYMBOL NO.	INDEX NO.
C 140	168
C 141	168
C 142	168
C 143	169
C 144	168
C 145	169
C 146	168
C 147	168
C 148	169
C 149	168

SYMBOL NO.	INDEX NO.
C 150	168
C 151	169
C 152	164
C 153	164
C 154	168
C 155	168
C 156	168
C 157	168
C 158	168
C 159	168

SYMBOL NO.	INDEX NO.
C 160	168
C 161	168
C 162	168
C 163	168
C 164	168
C 165	168
C 166	168
C 167	168
C 168	168
C 169	168

SYMBOL NO.	INDEX NO.
C 170	168
C 171	168
C 172	168
C 173	189
C 174	168
C 175	168
C 176	168
C 177	168
C 178	166
C 179	168

DIODE

SYMBOL NO.	INDEX NO.
C 180	168
C 181	168
C 182	189
C 183	167

SYMBOL NO.	INDEX NO.
D 100	120
D 101	120
D 102	120
D 103	120
D 104	120
D 105	120
D 106	120

DIP SWITCH

SYMBOL NO.	INDEX NO.
DPS 100	115
DPS 101	115

SYMBOL NO.	INDEX NO.
FU 100	112
FU 100	113

IC

SYMBOL NO.	INDEX NO.
IC 100	135
IC 101	135
IC 102	125
IC 103	125
IC 104	2
IC 104	111
IC 105	126
IC 106	130
IC 107	131
IC 108	125

SYMBOL NO.	INDEX NO.
IC 109	133
IC 110	128
IC 111	129
IC 112	140
IC 113	127
IC 114	134
IC 115	134
IC 116	134
IC 117	134
IC 118	142

SYMBOL NO.	INDEX NO.
IC 119	142
IC 120	139
IC 121	139
IC 122	132
IC 123	3
IC 123	119
IC 124	1
IC 125	101
IC 125	138
IC 126	142

LED

SYMBOL NO.	INDEX NO.
IC 127	137
IC 128	141
IC 129	136
IC 130	139

SYMBOL NO.	INDEX NO.
LED 100	123
LED 101	123
LED 102	123
LED 103	123
LED 104	123
LED 105	123
LED 106	123
LED 107	123
LED 108	123
LED 109	124

SYMBOL NO.	INDEX NO.
LED 110	123

COIL

SYMBOL NO.	INDEX NO.
L 100	154

OSCILLATOR

SYMBOL NO.	INDEX NO.
OSC 100	143

PHOTO THYRISTOR

SYMBOL NO.	INDEX NO.
PC 100	122
PC 101	121

TRANSISTOR

SYMBOL NO.	INDEX NO.
Q 100	101
Q 100	118
Q 101	101
Q 101	118
Q 102	116
Q 103	116
Q 104	116
Q 105	116
Q 106	117
Q 107	117

SYMBOL NO.	INDEX NO.
Q 108	117

RESISTOR ARRAY

SYMBOL NO.	INDEX NO.
RAY 100	153
RAY 101	153
RAY 102	153
RAY 103	149

RESISTOR

SYMBOL NO.	INDEX NO.
R 100	146
R 103	148
R 104	144
R 105	191
R 106	191
R 107	147
R 108	145
R 109	190
R 110	180
R 111	171

SYMBOL NO.	INDEX NO.
R 112	171
R 113	180
R 114	177
R 115	177
R 116	177
R 117	177
R 118	183
R 119	173
R 120	178
R 121	177

SYMBOL NO.	INDEX NO.
R 122	171
R 123	180
R 124	171
R 125	180
R 126	180
R 127	180
R 128	171
R 129	171
R 130	178
R 131	173

SYMBOL NO.	INDEX NO.
R 132	177
R 133	177
R 134	177
R 135	177
R 136	173
R 137	173
R 138	177
R 139	178
R 141	176
R 142	186

SYMBOL NO.	INDEX NO.
R 143	185
R 144	177
R 145	177
R 146	177
R 147	173
R 148	173
R 149	173
R 150	177
R 151	172
R 152	183

SYMBOL NO.	INDEX NO.
R 153	172
R 154	187
R 155	186
R 156	177
R 157	177
R 158	181
R 159	184
R 160	185
R 161	177
R 162	183

SYMBOL NO.	INDEX NO.
R 163	176
R 164	177
R 165	177
R 166	179
R 167	177
R 168	180
R 169	180
R 170	180
R 171	177
R 172	177

SYMBOL NO.	INDEX NO.
R 173	177
R 174	177
R 175	171
R 176	180
R 177	180
R 178	180
R 179	180
R 180	173
R 181	173
R 182	173

SYMBOL NO.	INDEX NO.
R 183	173
R 184	182
R 185	182
R 186	180
R 187	182
R 188	180
R 189	182
R 190	180
R 191	182
R 192	180

SYMBOL NO.	INDEX NO.
R 193	180
R 194	180
R 195	180
R 196	180
R 197	182
R 198	182
R 199	182
R 200	180
R 201	182
R 202	180

SYMBOL NO.	INDEX NO.
R 203	182
R 204	188
R 205	188
R 206	188
R 207	188
R 208	180
R 209	180
R 210	180
R 211	180
R 212	180

SYMBOL NO.	INDEX NO.
R 213	180
R 214	180
R 215	180
R 216	177
R 217	180
R 218	180
R 219	180
R 220	180
R 221	180
R 222	180

VARIABLE RESISTOR SW

SYMBOL NO.	INDEX NO.
R 223	180
R 224	180
R 225	177
R 226	176
R 227	176
R 228	183
R 229	183
R 230	170
R 231	180
R 232	180

SYMBOL NO.	INDEX NO.
R 233	180
R 234	177
R 235	174
R 236	174
R 237	174
R 238	180
R 239	174
R 240	174
R 241	174
R 242	174

SYMBOL NO.	INDEX NO.
R 243	174
R 244	174
R 245	174
R 246	174
R 247	177
R 248	175
R 249	180
R 250	177
R 251	177

SYMBOL NO.	INDEX NO.
VR 100	151
VR 101	151
VR 102	152
VR 103	152
VR 104	151
VR 105	150
VR 106	150

SYMBOL NO.	INDEX NO.
SW 100	114
SW 101	114

TEST PIN

SYMBOL NO.	INDEX NO.
TP 100	102
TP 101	102
TP 102	102
TP 103	102

12. MAIN BOARD (A499)

October 5, '90

Index No.	Part No.	Description	Q'ty Per Assembly
*	A499 5601	Main Board	1
1	A422 5350	IC - HCTL-3	1
2	A499 5651	ROM - Main Control	1
3	5936 5221	Heat Sink	1

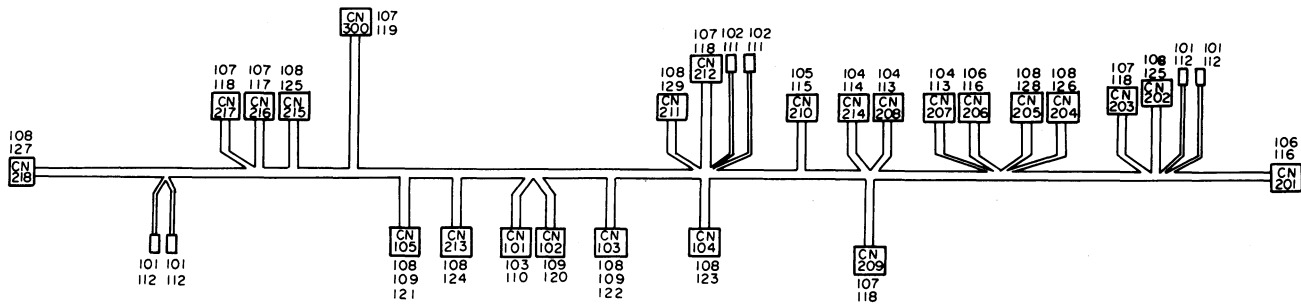
Index No.	Part No.	Description	Q'ty Per Assembly
101	1005 0843	Heat Sink - OSH2425SP	
102	1101 0328	Connector Pin Contact	
103	1102 1048	Pin Housing - Mate-N-Lock - 3P	
104	1102 4167	Connector - 6P	
105	1102 4169	Connector -10P	
106	1102 4174	Connector - 26P	
107	1102 4176	Connector - 34P	
108	1102 5003	Connector - 2P	
109	1103 0881	Connector - 4P	
110	1103 1737	Connector - 15P	
111	1104 0271	LSI Socket - 28P	
112	1104 0333	Fuse Holder	
113	1107 0459	Fuse - 5A	
114	1204 1385	Push Switch	
115	1204 1422	DIP Switch	
116	1400 0368	Transistor - 2SC3325	
117	1400 0454	Transistor - 2SB710A	
118	1401 0282	Transistor - 2SB1020	
119	1401 0329	Transistor Array - MP4503	
120	1401 0832	Diode - DSA1A1	
121	1403 0317	IC - ON3112	
122	1403 0388	PhotoCoupler - ON3111	
123	1403 0669	Red LED - SLM-13VW	
124	1403 0670	Green LED - SLM-13VW	
125	1407 1298	IC - TC4049BF	
126	1407 1882	IC - SN74LS373NS	
127	1407 2051	IC - SN74LS00NS	
128	1407 2054	IC - TD62308F	
129	1407 2055	IC - TD62304F	
130	1407 2057	IC - 82C55AFP-5	
131	1407 2073	IC - μ PD78C10GF	
132	1407 2187	IC - SN74LS07NS	
133	1407 2218	IC - SN74LS06NS	
134	1407 2361	IC - TC4040BF	
135	1407 2858	IC - TD62601F	

Index No.	Part No.	Description	Q'ty Per Assembly
136	1407 3540	Transistor - SMA5103	
137	1407 3541	IC - HD74LS26FP	
138	1408 0264	IC -7812	
139	1408 0395	IC - 6912s	
140	1408 0408	IC - PST518A	
141	1408 0538	IC - SI8301L	
142	1408 0599	IC - M51971EP	
143	1503 0071	Oscillator - 12 MHz	
144	1600 0239	Resistor -0.47 OHM \pm 5% 1W	
145	1600 1226	Resistor -8.2 OHM 3W \pm 5%	
146	1600 1354	Resistor Array -1k OHM 1W	
147	1600 1434	Resistor -18 OHM 5W \pm 10%	
148	1601 1732	Resistor -390 OHM \pm 5% 1W	
149	1601 7326	Resistor Array - 10k OHM	
150	1601 8138	Variable Resistor - 30k OHM 0.75W	
151	1601 8147	Variable Resistor - 10k OHM 0.5W	
152	1601 8148	Variable Resistor - 20k OHM 0.5W	
153	1602 0934	RC Array - CR01 -R	
154	1602 0953	Coil - 800 μ H 2.5A	
155	1604 1360	Capacitor - 3300 μ F 10V	
156	1604 1378	Capacitor - 1 μ F 50V	
157	1604 1379	Capacitor - 2.2 μ F \pm 20% 50V	
158	1604 1380	Capacitor - 3.3 μ F 50V	
159	1604 1381	Capacitor - 4.7 μ F 50V	
160	1604 1383	Capacitor - 22 μ F 50V	
161	1604 1386	Capacitor - 100 μ F \pm 20% 50V	
162	1604 1390	Capacitor - 1000 μ F 50V	
163	1605 0141	Capacitor - 4700pF 50V	
164	1605 0145	Capacitor - 30pF 50V	
165	1606 0658	Capacitor - 0.1 μ F 50V	
166	1606 1348	Capacitor - 0.022 μ F 50V	
167	1606 1451	Capacitor - 0.1 μ F 50V	
168	1606 1452	Capacitor - 0.01 μ F 50V	
169	1606 1455	Capacitor - 470pF 25V	
170	1610 0031	Resistor -47 OHM 1/8W	

Index No.	Part No.	Description	Q'ty Per Assembly
171	1610 0035	Resistor -100 OHM 1/8W \pm 5%	
172	1610 0041	Resistor -180 OHM 1/8W \pm 5%	
173	1610 0053	Resistor -1k OHM 1/8W \pm 5%	
174	1610 0057	Resistor - 1.5k OHM 1/8W \pm 5%	
175	1610 0060	Resistor - 2.0k OHM 1/8T \pm 5%	
176	1610 0064	Resistor - 3k OHM 1/8W \pm 5%	
177	1610 0067	Resistor - 4.7k OHM 1/8W \pm 5%	
178	1610 0068	Resistor - 5.6k OHM 1/8W \pm 5%	
179	1610 0070	Resistor - 8.2k OHM 1/8T \pm 5%	
180	1610 0071	Resistor - 10k OHM \pm 5% 1/8W	
181	1610 0073	Resistor - 12K OHM 1/8W \pm 5%	
182	1610 0078	Resistor - 22k OHM 1/8W \pm 5%	
183	1610 0079	Resistor - 22k OHM 1/8W \pm 5%	
184	1610 0084	Resistor - 39k OHM 1/8W \pm 5%	
185	1610 0085	Resistor - 47k OHM 1/8W \pm 5%	
186	1610 0088	Resistor - 82k OHM 1/8W \pm 5%	
187	1610 0089	Resistor - 100k OHM 1/8W \pm 5%	
188	1610 0107	Resistor -1M OHM 1/8W \pm 5%	
189	1610 0286	Capacitor - 100pF 50V \pm 10%	
190	1611 4151	Resistor -150 OHM 1/4T \pm 5%	
191	1611 4272	Resistor - 2.7k OHM 1/4T \pm 5%	

13. MAIN HARNESS (A499)

October 5,'90

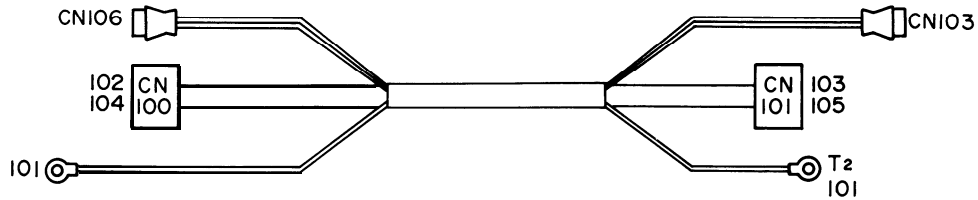


13. MAIN HARNESS (A499)

October 5,'90

Index No.	Part No.	Description	Q'ty Per Assembly
*	A499 5701	Main Harness	1

Index No.	Part No.	Description	Q'ty Per Assembly
101	1100 1169	Fastening Receptacle	
102	1100 1172	Fastening Receptacle	
103	1100 1191	Terminal	
104	1100 1240	Socket - Mate-N-Lock	
105	1100 1274	Fastening Receptacle	
106	1100 1327	Contact	
107	1100 1329	Socket Contact	
108	1100 1499	Connector - 1P	
109	1100 1536	Connector - 1P	
110	1102 1374	Connector - 4P	
111	1102 1404	Receptacle Housing	
112	1102 1408	Connector - 1P	
113	1102 1515	Connector - 2P	
114	1102 1517	Connector - 4P	
115	1102 1783	Connector - 8P	
116	1102 1910	Connector - 2P	
117	1102 1982	Socket Housing - 2P	
118	1102 1983	Socket Housing - 3P	
119	1102 1990	Socket Housing - 10P	
120	1102 4179	Socket Housing - DF1B - 6P	
121	1102 4181	Connector - 10P	
122	1102 4185	Connector - 26P	
123	1102 4187	Socket Housing - DF1B - 34P	
124	1104 0506	Connector - 2P	
125	1104 0507	Connector - 3P	
126	1104 0521	Socket Housing - DF1B - 2P - Red	
127	1104 0525	Socket Housing - DF1B - 3P - Red	
128	1104 0527	Socket Housing - DF1B - 4P - White	
129	1104 0538	Socket Housing - DF1B - 9P - White	
130	1607 0116	Ferrite Core	

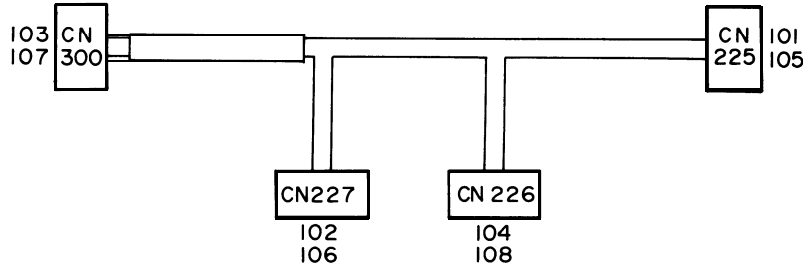


14. INTERFACE HARNESS (A499)

October 5, '90

Index No.	Part No.	Description	Q'ty Per Assembly,
*	A499 5705	Interface Harness	1
1	A499 5706	Optical Fiber Harness	1

Index No.	Part No.	Description	Q'ty Per Assembly
101	1100 0051	Wire Terminal	
102	1100 1190	Socket - Mate-N-Lock	
103	1100 1447	Socket - Mate-N-Lock	
104	1102 1373	Connector - 3P	
105	1102 1517	Connector - 4P	



15. EXIT HARNESS (A499)

October 5 '90

Index No.	Part No.	Description	Q'ty Per Assembly
*	A499 5704	Exit Harness	1

Index No.	Part No.	Description	Q'ty Per Assembly
101	1100 1259	Socket - Mate-N-Lock	
102	1100 1328	Contact	
103	1100 1329	Socket Contact	
104	1100 1499	Connector - 1P	
105	1102 1089	Connector - 3P	
106	1102 1966	Connector - 4P	
107	1102 1990	Socket Housing - 10P	
108	1104 0507	Connector - 3P	

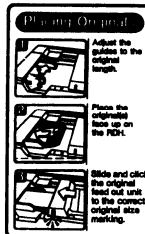
1



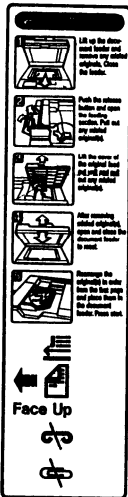
3



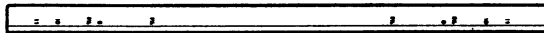
6



2



4



5



16. DECAL (A499)

October 5, '90

Index No.	Part No.	Description	Q'ty Per Assembly
1	A499 3531	Indication Panel	1
2	A499 6022	Decal - Misfeed Removal	1
3	A499 6026	Decal - DIP Switch	1
4	A499 6012	Decal - Slide Fence - LT	1
4	A499 6013	Decal - Slide Fence - A4	1
5	A499 6015	Decal - Exit - LT	1
5	A499 6016	Decal - Exit - A4	1
6	A499 6018	Decal - Set Original	1

Index No.	Part No.	Description	Q'ty Per Assembly
-----------	----------	-------------	-------------------

PARTS INDEX

Part No.	Description	Page and Index No.
A499 1111	Left Cover	9- 1
A499 1120	Separation Belt Holder	9- 4
A499 1121	Separation Belt	9-33
A499 1122	Shaft Holder	9-41
A499 1123	Left Cover Bracket	9-42
A499 1126	Separation Guide	9- 3
A499 1129	Shaft - Tension Roller Holder	9-37
A499 1131	Tension Roller Holder	9-35
A499 1135	Tension Roller	9-36
A499 1153	Grounding Plate	9- 2
A499 1211	Separation Roller	7- 2
A499 1212	Guide Roller	7- 1
A499 1215	Separation Drive Shaft	7- 19
A499 1224	Inner Separation Guide	7- 8
A499 1231	Original Table	21- 3
A499 1236	Original Table Support Plate	21- 18
A499 1237	Side Fence Gear	21- 4
A499 1238	Side Fence Guide Rail	21- 17
A499 1239	Gear - 20Z	21- 16
A499 1242	Original Table Cop	21- 13
A499 1245	Table Support Bracket	23- 16
A499 1246	Guide Seal - 1x8x16mm	21- 5
A499 1251	Front Side Fence	21- 1
A499 1261	Rear Side Fence	21- 2
A499 1272	Upper Feed Out Guide	11- 1
A499 1274	Register Sensor Bracket	11- 2
A499 1275	Grounding Plate	11-23
A499 1277	Original Set Sensor Bracket	23- 2
A499 1311	Original Entrance Guide	9- 18
A499 1312	Separation Guide Bracket	9-27
A499 1313	Paper Guide Mylar	9-28
A499 1314	Cushion - 5x10X20	9- 14
A499 1315	Original Sensor Bracket	9-20
A499 1317	Guide Seal	9- 15
A499 1321	Original Stopper Bracket	9-26

Part No.	Description	Page and Index No.
A499 1323	Original Stopper	9- 29
A499 1325	Stud - M4x5	9-22
A499 1326	Holder - Original Stopper Bracket	9- 5
A499 1331	Stopper Solenoid Bracket	9- 8
A499 1332	Stopper Solenoid Lever	9- 10
A499 1335	Stopper	9- 17
A499 1336	Stopper Positioning Plate	9-24
A499 1341	Release Lever - Separation Unit	9-31
A499 1346	Knob - Release Lever	9-32
A499 1351	Original Feed Out Stay	11- 15
A499 1355	Idle Roller	11- 16
A499 1356	Sensor Pad Plate	11- 17
A499 1358	Lower Feed Out Guide	11- 14
A499 1361	Bracket - Idle Roller Arm	11- 19
A499 1365	Idle Roller Arm	11-20
A499 1371	Pulse Generator Bracket	11- 8
A499 1375	Pulse Generator	11- 11
A499 1378	Stepped Screw - M4x6	11- 10
A499 1379	Sensor Pad	11- 5
A499 1415	Stud - M4x5	7- 5
A499 1422	DC Motor Bracket	25- 8
A499 1433	Shaft - Roller Clutch - Z20	25-28
A499 1434	Idle Gear Shaft	25- 18
A499 1451	Motor Support Bracket	25- 2
A499 1458	Pick-up Roller Cam	7- 18
A499 1461	Cam Lever	7- 14
A499 1464	Stepped Screw - M4	7- 15
A499 1465	Bushing - 5M	7- 13
A499 1467	Positioning Sensor Bracket	7- 11
A499 1511	Front Frame - Transport Belt	13- 11
A499 1522	Rear Frame - Transport Belt	13- 16
A499 1531	Left Stay	13- 6
A499 1532	Middle Stay	13- 14
A499 1536	Belt Guide - Front Left	13- 17
A499 1537	Belt Guide - Front Right	13- 13

Part No.	Description	Page and Index No.
A499 1542	Belt Unit Hinge	13-20
A499 1545	Belt Unit Arm	13- 8
A499 1551	Bushing - 6M	13-24
A499 1552	Bushing - 6M	13- 10
A499 1556	Pin - 4x16	13-21
A499 1561	Belt Release Bracket	13-26
A499 1571	Tension Plate	13-23
A499 1576	Right Belt Guide	13-22
A499 1581	Support Plate - Release Bracket	13- 7
A499 1616	Bushing - 4M	13- 5
A499 1711	Invertor Guide Plate	15- 3
A499 1721	Invertor Guide	15- 14
A499 1731	Idle Roller Arm	15- 19
A499 1735	Invertor Stay	15- 16
A499 1738	Invertor Sensor Cover	15-20
A499 1746	Mylar - 128x18	15-25
A499 1751	Invertor Pawls	15- 1
A499 1752	Invertor Lever	15- 10
A499 1761	Invertor Solenoid Bracket	15- 6
A499 1771	Stopper Plate	23- 12
A499 1772	Cushion - 44x10X3	23- 13
A499 1813	Stud - Gear 16/22Z	7-24
A499 1816	Stud - Gear 20Z	7-20
A499 1821	Belt Drive Motor Bracket	25- 16
A499 1851	Motor Bracket - Invertor	25-22
A499 2111	Exit Frame	17-33
A499 2121	Slider Lock	17- 6
A499 2131	End Fence - Center	17- 5
A499 2141	End Fence Link	17-36
A499 2142	End Fence Lever	17-39
A499 2146	Exit Screw Bracket	17-42
A499 2151	Front Fixing Plate	17-24
A499 2156	Slider Guide	17- 14
A499 2161	Rear Fixing Plate	17- 9
A499 2166	Exit Harness Holder	17- 13

Part No.	Description	Page and Index No.
A499 2171	Guide Bracket	17-21
A499 2176	Exit Cover Magnet	17- 19
A499 2177	Magnet Holder	17- 18
A499 2181	Fixing Roller	17- 8
A499 2183	Locking Roller	17-22
A499 2189	Gear - 28Z	17-23
A499 2191	Slider Pinion Shaft	17-30
A499 2194	Slider Rack	23- 6
A499 2194	Slider Rack	23-25
A499 2198	Invertor Guide Plate	17- 4
A499 2201	Front End Fence	17- 1
A499 2211	Rear End Fence	17- 2
A499 2241	Positioning Holder	17-31
A499 2246	Harness Cover	17- 7
A499 2301	Slider Cover	19- 2
A499 2313	Front Positioning Plate	19-28
A499 2317	Rear Positioning Plate	19- 3
A499 2321	Exit Guide Roller - Right	19-25
A499 2326	Exit Guide Roller - Left	19- 26
A499 2331	Slider Hinge	19- 4
A499 2338	Antistatic Brush Plate	19- 1
A499 2341	Exit Grounding Plate	19-27
A499 2346	Front Slide Rail	19- 22
A499 2347	Rear Slide Rail	19-24
A499 2352	Middle Guide Plate	19- 11
A499 2375	Guide Shaft Bracket .	25- 4
A499 2377	Bushing - 6M	19- 12
A499 2378	Shaft - Guide - Slide	19- 14
A499 2379	Middle Guide Spacer	19- 29
A499 2381	Right Guide Plate	19-20
A499 2386	Left Hinge - Support Cover	23- 5
A499 2388	Right Guide Spacer	19- 10
A499 2389	Slider Guide Screw	19- 9
A499 2391	Actuator	19- 13
A499 2395	Magnet Holder	15- 22

Part No.	Description	Page and Index No.
A499 2396	Magnet	15-24
A499 2401	Lock Arm Pin	19- 15
A499 2402	Slider Lock Arm	19- 16
A499 2403	Slider Lock Lever	19- 17
A499 2411	Right Table	21- 14
A499 2421	Front Stay - Right Table	21- 12
A499 2422	Rear Stay - Right Table	21- 11
A499 2426	Idle Roller Shaft	21- 8
A499 2427	idle Roller	21- 7
A499 2431	Transport Belt - Right Table	21- 10
A499 2444	Middle Belt Roller	19-30
A499 2445	Holder - Middle Belt Roller	19- 31
A499 3111	Front Frame	23- 17
A499 3131	Main Hinge	23- 11
A499 3135	Right Stay	23- 3
A499 3135	Right Stay	23- 14
A499 3142	Switch Bracket - Separation	11- 4
A499 3145	Switch Bracket - Slide Cover	23- 9
A499 3146	Actuator Shaft	23- 8
A499 3147	Actuator - Slider Cover	23- 7
A499 3152	Switch Bracket	25-32
A499 3156	Main Board Cover	25- 13
A499 3157	LED Cover	25- 14
A499 3161	Right Support Plate	25-29
A499 3165	Indication Board Bracket	25- 7
A499 3167	Board Protect Sheet	25- 19
A499 3186	Right Hinge	23- 10
A499 3511	Rear Cover	5- 4
A499 3521	Cap - Rear Cover	5- 5
A499 3531	Indication Panel	5- 3
A499 3531	Indication Panel	35- 1
A499 3541	Front Cover	5- 11
A499 3551	Right Cover	15-21
A499 3561	Right Upper Cover	5- 2
A499 3591	Slide Support Cover	5- 7

Part No.	Description	Page and Index No.
A499 3606	Seal	5- 10
A499 3606	Seal	19- 5
A499 3611	Left Magnet Catch Hinge	23- 18
A499 3616	Right Magnet Catch Hinge	23-22
A499 3621	Grip - Magnet Catch	5- 9
A499 3631	Cushion - Magnet Catch	23- 19
A499 3635	Magnet Catch Stay	23-20
A499 3651	Slider Grip	19-21
A499 3720	Middle Slide Cover	19- 6
A499 3730	Right Slide Cover	19- 8
A499 4112	Hinge Plate	5- 12
A499 4116	Safety Switch Lever	5- 13
A499 5501	Slider Harness	17- 11
A499 5551	Indication Board	25- 10
A499 5601	Main Board	25- 11
A499 5601	Main Board	27- *
A499 5651	ROM - Main Control	25- 12
A499 5651	ROM - Main Control	27- 2
A499 5701	Main Harness	25- 15
A499 5701	Main Harness	29- *
A499 5702	Registration Sensor Harness	11- 7
A499 5703	Harness - Original Sensor	9- 13
A499 5704	Exit Harness	17- 12
A499 5704	Exit Harness	33- *
A499 5705	Interface - Harness	25-26
A499 5705	Interface Harness	31- *
A499 5706	Optical Fiber Harness	31- 1
A499 5707	Grounding Wire	13- 4
A499 5708	Harness - Invertor Sensor	15-26
A499 6012	Decal - Side Fence - LT	5- 1
A499 6012	Decal - Slide Fence - LT	35- 4
A499 6013	Decal - Side Fence - A4	5- 1
A499 6013	Decal - Slide Fence - A4	35- 4
A499 6015	Decal - Exit - LT	35- 5
A499 6016	Decal - Exit - A4	35- 5

Part No.	Description	Page and Index No.
A499 6018	Decal - Set Original	19-23
A499 6018	Decal - Set Original	35- 6
A499 6022	Decal - Misfeed Removal	19- 19
A499 6022	Decal - Misfeed Removal	35- 2
A499 6026	Decal - DIP Switch	5- 6
A499 6026	Decal - DIP Switch	35- 3

Part No.	Description	Page and Index No.
AA06 0259	Spring - Middle Roller	19- 7
AA06 0276	Spring	9-38
AA06 0277	Release Spring	9-25
AA06 0278	Release Spring	9-30
AA06 0279	Pressure Spring	7- 16
AA06 0280	Spring - Invertor Guide	15- 5
AA06 0282	Pressure Spring	15- 18
AA06 0283	Spring - Invertor Solenoid	15- 27
AA06 0284	Spring - Pick-up	17-40
AA06 0285	Spring - Cover - Open And Close	5- 8
AA06 0286	Tension Spring	13-27
AA06 0287	Spring - Invertor Lever	15- 8
AA06 3151	Inner Pressure Spring	11- 12
AA06 3152	Outer Pressure Spring	11-21
AA06 3153	Pressure Spring	13- 9
AA06 3154	Spring - Lock	17-44
AA06 3155	Adjusting Spring	9-23
AA06 6054	Spring	15- 9
AA08 0004	Bushing - 4x6x5	17-25
AA12 0031	Antistatic Brush	17- 3
AA12 0032	Antistatic Brush	11- 18
AA12 0032	Antistatic Brush	13-28
AA12 0032	Antistatic Brush	23- 15
AA14 0060	Stepped Screw - M3x5	17-45
AA14 0065	Stepped Screw - M3x6	17-41
AA14 0315	Stepped Screw	5- 14
AA14 3062	Shoulder Screw - M4	13- 15
AA14 3097	Stepped Screw - M5	5- 15
AA14 3283	Stud - M4	17-20
AA14 3284	Stepped Screw - M3x11	17- 17
AA14 3284	Stepped Screw - M3x11	17-38
AA14 3286	Stepped Screw - M4	17- 16
AA16 1022	Cushion	9- 16
AA16 1022	Cushion	17-34
AA99 1513	Front Pressure Plate	13-29

Part No.	Description	Page and Index No.
AA99 1523	Rear Pressure Plate	13-30
AB01 0049	Gear - 31Z	9- 6
AB01 0050	Gear - 32Z	9-34
AB01 0051	Gear - 26Z	11- 13
AB01 0052	Gear - 28Z	17-26
AB01 0053	Gear - 35Z	17-27
AB01 0058	Gear - 17Z	25-21
AB01 0059	Gear - 15/38Z	25-25
AB01 1086	Gear - 20Z	7- 6
AB01 1087	Gear - 53Z	25- 6
AB01 1089	Gear - 20Z	25-27
AB01 1090	Gear - 20Z	7- 7
AB01 1091	Gear - 30Z	7- 9
AB01 1092	Gear - 35Z	7-23
AB01 1093	Gear - 35Z	7-21
AB01 1094	Gear - 16/31Z	25- 17
AB01 1095	Gear-18Z	25- 5
AB01 1097	Gear - 22/26Z	25-23
AB01 1098	Gear - 35Z	15- 13
AB01 1099	Gear - 20Z	21- 6
AB01 1100	Gear - 20Z	25-31
AB03 0208	Pulley 16/22Z	7-22
AB03 0236	Pulley - 21Z	13- 18
AB04 3005	Timing Belt - 225XL	7-25
AF02 0161	Feed-out Roller	7- 3
AF02 0162	Belt Drive Roller	13- 2
AF02 0163	Belt Pressure Roller	13- 3
AF02 0164	Invertor Roller	15- 4
AF02 0165	Exit Roller	17-29
AF02 0166	Belt Drive Roller - Right Table	21- 9
AF02 0167	Drive Roller Separation Belt	9-39
AF02 1020	Drive Roller	13-25
AF02 2046	Idle Roller	15- 17
AF02 3001	Belt Support Roller	13- 12
AF02 3002	1st Pick-up Roller	7-26

Part No.	Description	Page and Index No.
AF02 3003	2nd Pick-up Roller	7-27
AX04 0037	Magnetic Clutch	7- 4
AX06 0027	Drive Motor - DC24V/21W	25- 9
AX06 0032	DC Motor - DC5V 15W	25-20
A010 5700	Sensor	9- 19
A010 5700	Sensor	23- 1
A010 5740	DC Motor	25- 1
A028 5876	Original Stopper Solenoid	9- 9
A028 5876	Original Stopper Solenoid	15- 7
A028 5876	Original Stopper Solenoid	17- 37
A409 1234	Exit Motor - DC 9W	17-32
A422 1078	Bushing - 6x12x4mm	7- 10
A422 1078	Bushing - 6x12x4mm	9-40
A422 1078	Bushing - 6x12x4mm	13- 19
A422 1078	Bushing - 6x12x4mm	17-28
A422 1079	Bushing - 8x16x5mm	15- 12
A422 5270	Photosensor	11- 3
A422 5270	Photosensor	15- 15
A422 5270	Photosensor	17-43
A422 5350	IC - HCTL-3	27- 1
A454 1172	Collar - M6	17- 10
A497 1125	Transport Belt	13- 1
A497 1152	Magnet - APS	23-24
A497 2024	Paper Guide Mylar	15- 2
H006 2171	Exit Stepped Screw	9-21
H006 2171	Exit Stepped Screw	17-35
H014 3107	Bushing - Locking Lever	15- 11
H014 3107	Bushing - Locking Lever	25-24
5056 0509	Nut Plate - Microswitch	11- 6
5056 0509	Nut Plate - Microswitch	25-30
5215 3072	Side Magnet	19- 18
5216 5245	Photointerruptor - IL-G-3P-S3T2-E	7- 12
5216 5245	Photointerruptor - IL-G-3P-S3T2-E	11- 9
5216 5245	Photointerruptor - IL-G-3P-S3T2-E	25- 3
5403 1910	Spring Anchor - Stopper Lever	9- 12

Part No.	Description	Page and Index No.
5415 4145	stud	9- 11
5443 2712	Cork Pad	21- 15
5446 2824	Screw - Duplex Guide Plate	9- 7
5446 2824	Screw - Duplex Guide Plate	11-22
5446 2824	Screw - Duplex Guide Plate	15-23
5866 1728	Collar -6.1 mm	17- 15
5936 1145	Position Encoder	7- 17
5936 2480	Magnet Catch Ass'y	23-21
5936 2480	Magnet Catch Ass'y	23-23
5936 5221	Heat Sink	27- 3

Part No.	Description	Page and Index No.
0313 0040W	Philips Pan Head Screw - M3x4	9-101
0313 0040W	Philips Pan Head Screw - M3x4	15-101
0313 0040W	Philips Pan Head Screw - M3x4	17-101
0313 0040W	Philips Pan Head Screw - M3x4	23-101
0313 0040W	Philips Pan Head Screw - M3x4	25-101
0313 0060M	Philips Pan Head Screw - M3x6	9102
0313 0060M	Philips Pan Head Screw - M3x6	25-102
0313 0060W	Philips Pan Head Screw - M3x6	9-103
0313 0060W	Philips Pan Head Screw - M3x6	17-102
0313 0060W	Philips Pan Head Screw - M3x6	23-102
0313 0160B	Philips Pan Head Screw - M3x16	11-101
0313 0160B	Philips Pan Head Screw - M3x16	15-102
0313 0160B	Philips Pan Head Screw - M3x16	23-103
0313 0160W	Philips Pan Head Screw - M3x16	17-103
0314 0040W	Philips Pan Head Screw - M4x4	17-104
0314 0060W	Philips Pan Head Screw - M4x6	5-101
0314 0060W	Philips Pan Head Screw - M4x6	7-101
0314 0060W	Philips Pan Head Screw - M4x6	9-104
0314 0060W	Philips Pan Head Screw - M4x6	11-102
0314 0060W	Philips Pan Head Screw - M4x6	13-101
0314 0060W	Philips Pan Head Screw - M4x6	15-103
0314 0060W	Philips Pan Head Screw - M4x6	17-105
0314 0060W	Philips Pan Head Screw - M4x6	19-101
0314 0060W	Philips Pan Head Screw - M4x6	21-101
0314 0060W	Philips Pan Head Screw - M4x6	23-104
0314 0060W	Philips Pan Head Screw - M4x6	25-103
0314 0080M	Philips Pan Head Screw - M5x8	25-104
0314 0080W	Philips Pan Head Screw - M4x8	5-102
0344 0060F	Philips Truss Head Screw - M4x6	5-103
0344 0060F	Philips Truss Head Screw - M4x6	13-102
0344 0060F	Philips Truss Head Screw - M4x6	21-102
0344 0060W	Philips Truss Head Screw - M4x6	17-106
0344 0060W	Philips Truss Head Screw - M4x6	21-103
0354 0080W	Philips Pan Head Screw - M4x8	15-104
0354 0100W	Philips Pan Head Screw - M4x10	5-104

Part No.	Description	Page and Index No.
0573 0040E	Hexagon Headless Set Screw - M3x4	25-105
0574 0040E	Hexagon Headless Set Screw - M4x4	7-102
0623 0100E	Spring Pin - 3x10mm	9-105
0623 0100E	Spring Pin - 3x10mm	15-105
0623 0100E	Spring Pin - 3x10mm	17-107
0632 0100E	Pin - M2x10	7-103
0632 0100E	Pin - M2x10	9-106
0632 0100E	Pin - M2x10	15-106
0632 0120E	Spring Pin -2 x 12mm	7-104
0632 0120E	Spring Pin -2 x 12mm	13-103
0632 0120E	Spring Pin -2 x 12mm	17-108
0632 0120E	Spring Pin -2 x 12mm	21-104
0632 0140E	Parallel Pin - M2x14	15-107
0632 0160E	Parallel Pin - M2x16	7-105
0704 0040C	Toothed Washer - M4	25-106
0720 0025E	Retaining Ring - M2.5	5-105
0720 0025E	Retaining Ring - M2.5	17-109
0720 0025E	Retaining Ring - M2.5	23-105
0720 0030E	Retaining Ring - M3	9-107
0720 0030E	Retaining Ring - M3	11-103
0720 0030E	Retaining Ring - M3	13-104
0720 0030E	Retaining Ring - M3	17-110
0720 0030E	Retaining Ring - M3	19-102
0720 0030E	Retaining Ring - M3	23-106
0720 0030E	Retaining Ring - M3	25-107
0720 0040E	Retaining Ring - M4	7-106
0720 0040E	Retaining Ring - M4	9-108
0720 0040E	Retaining Ring - M4	13-105
0720 0040E	Retaining Ring - M4	15-108
0720 0040E	Retaining Ring - M4	17-111
0720 0040E	Retaining Ring - M4	19-103
0720 0040E	Retaining Ring - M4	21-105
0720 0040E	Retaining Ring - M4	25-108
0720 0050E	Retaining Ring - M5	7-107
0720 0050E	Retaining Ring - M5	25-109

Part No.	Description	Page and Index No.
0720 0060E	Retaining Ring - M6	7-108
0720 0060E	Retaining Ring - M6	15-109
0720 0060E	Retaining Ring - M6	25-110
0720 0070E	Retaining Ring - M7	7-109
0741 3505	Ball Bearing -5x10x 4 mm	21-106
0741 3506	Ball Bearing - 6x12x4 mm	7-110
0741 3506	Ball Bearing - 6x12x4 mm	9-113
0741 3506	Ball Bearing - 6x12x4 mm	13-106
0741 3506	Ball Bearing - 6x12x4 mm	21-107
0741 3506	Ball Bearing - 6x12x4 mm	25-111
0801 1193W	Philips Truss Head Screw - M4x8	9-109
0805 3291	Ball Bearing - 8x16x5mm	7-111
0807 4048	Fiat Washer - M5	25-112
0807 4111	Washer - 5.2x14x0.1 mm	11-104
0807 4118	Flat Washer	7-112
0951 3006W	Philips Screw with Flat Washer - M3x6	9-110
0951 3006W	Philips Screw with Flat Washer - M3x6	21-108
0951 3006W	Philips Screw with Flat Washer - M3x6	25-113
0951 3010W	Philips Screw with Flat Washer - M3x10	7-113
0951 4006W	Philips Screw With Flat Washer - M4x6	9-111
0951 4006W	Philips Screw With Flat Washer - M4x6	21-109
0951 4006W	Philips Screw With Flat Washer- M4x6	25-114
0957 4008W	Screw - M5x8	25-115
0965 4006W	Tapping Screw - M4 x 6	9-112
1005 0843	Heat Sink - OSH2425SP	27-101
1100 0051	Wire Terminal	31-101
1100 1169	Fastening Receptacle	29-101
1100 1172	Fastening Receptacle	29-102
1100 1190	Socket - Mate-N-Lock	31-102
1100 1191	Terminal	29-103
1100 1240	Socket - Mate-N-Lock	29-104
1100 1259	Socket - Mate-N-Lock	33-101
1100 1274	Fastening Receptacle	29-105
1100 1327	Contact	29-106
1100 1328	Contact	33-102

Part No.	Description	Page and Index No.
1100 1329	Socket Contact	29-107
1100 1329	Socket Contact	33-103
1100 1447	Socket - Mate-N-Lock	31-103
1100 1499	Connector - 1P	29-108
1100 1499	Connector - 1P	33-104
1100 1536	Connector - 1P	29-109
1101 0328	Connector Pin Contact	27-102
1102 1048	Pin Housing - Mate-N-Lock - 3P	27-103
1102 1089	Connector - 3P	33-105
1102 1373	Connector - 3P	31-104
1102 1374	Connector - 4P	29-110
1102 1404	Receptacle Housing	29-111
1102 1408	Connector - 1P	29-112
1102 1515	Connector - 2P	29-113
1102 1517	Connector - 4P	29-114
1102 1517	Connector - 4P	31-105
1102 1783	Connector - 8P	29-115
1102 1910	Connector - 2P	29-116
1102 1966	Connector - 4P	33-106
1102 1982	Socket Housing - 2P	29-117
1102 1983	Socket Housing - 3P	29-118
1102 1990	Socket Housing - 10P	29-119
1102 1990	Socket Housing - 10P	33-107
1102 4167	Connector - 6P	27-104
1102 4169	Connector - 10P	27-105
1102 4174	Connector - 26P	27-106
1102 4176	Connector - 34P	27-107
1102 4179	Socket Housing - DF1B - 6P	29-120
1102 4181	Connector - 10P	29-121
1102 4185	Connector - 26P	29-122
1102 4187	Socket Housing - DF1B - 34P	29-123
1102 5003	Connector - 2P	27-108
1103 0881	Connector - 4P	27-109
1103 1737	Connector - 15P	27-110
1104 0271	LSI Socket - 28P	27-111

Part No.	Description	Page and Index No.
1104 0333	Fuse Holder	27-112
1104 0506	Connector - 2P	29-124
1104 0507	Connector - 3P	29-125
1104 0507	Connector - 3P	33-108
1104 0521	Socket Housing - DF1B -2P - Red	29-126
1104 0525	Socket Housing - DF1B -3P - Red	29-127
1104 0527	Socket Housing - DF1B - 4P - White	29-128
1104 0538	Socket Housing - DF1B - 9P - White	29-129
1105 0009	Nylon Clip - 5N	23-107
1105 0009	Nylon Clip - 5N	25-117
1105 0016	Nylon Clip - 4N	25-118
1105 0192	Locking Support	25-124
1105 0283	Clamp	17-112
1105 0310	Wire Clamp	25-116
1105 0326	Locking Support	25-122
1106 0411	Bushing -11.5mm	25-120
1107 0459	Fuse - 5A	25-119
1107 0459	Fuse - 5A	27-113
1204 1123	Microswitch	11-105
1204 1385	Push Switch	27-114
1204 1422	DIP Switch	27-115
1204 1433	Microswitch	25-121
1204 2188	Inter Lock Switch	25-123
1400 0368	Transistor - 2SC3325	27-116
1400 0454	Transistor - 2SB710A	27-117
1401 0282	Transistor - 2SB1020	27-118
1401 0329	Transistor Array - MP4503	27-119
1401 0832	Diode - DSA1A1	27-120
1403 0317	IC - ON3112	27-121
1403 0388	Photocoupler - ON3111	27-122
1403 0669	Red LED - SLM-13VW	27-123
1403 0670	Green LED - SLM-13VW	27-124
1407 1298	IC - TC4049BF	27-125
1407 1882	IC - SN74LS373NS	27-126
1407 2051	IC - SN74LS00NS	27-127

Part No.	Description	Page and Index No.
1407 2054	IC - TD62308F	27-128
1407 2055	IC - TD62304F	27-129
1407 2057	IC - 82C55AFP-5	27-130
1407 2073	IC - μ PD78C10GF	27-131
1407 2187	IC - SN74LS07NS	27-132
1407 2218	IC - SN74LS06NS	27-133
1407 2361	IC - TC4040BF	27-134
1407 2858	IC - TD62601F	27-135
1407 3540	Transistor - SMA5103	27-136
1407 3541	IC - HD74LS26FP	27-137
1408 0264	IC -7812	27-138
1408 0395	IC - 6912s	27-139
1408 0408	IC - PST518A	27-140
1408 0538	IC - SI8301L	27-141
1408 0599	IC - M51971EP	27-142
1503 0071	Oscillator - 12MHz	27-143
1600 0239	Resistor -0.47 OHM \pm 5% 1W	27-144
1600 1226	Resistor -8.2 OHM 3W \pm 5%	27-145
1600 1354	Resistor Array -1k OHM 1W	27-146
1600 1434	Resistor -18 OHM 5W \pm 10%	27-147
1601 1732	Resistor -390 OHM \pm 5% 1W	27-148
1601 7326	Resistor Array - 10k OHM	27-149
1601 8138	Variable Resistor - 30k OHM 0.75W	27-150
1601 8147	Variable Resistor - 10k OHM 0.5W	27-151
1601 8148	Variable Resistor - 20k OHM 0.5W	27-152
1602 0934	RC Array- CR01 - R	27-153
1602 0953	Coil - 800 μ H 2.5A	27-154
1604 1360	Capacitor - 3300 μ F 10V	27-155
1604 1378	Capacitor - 1 μ F 50V	27-156
1604 1379	Capacitor - 2.2 μ F \pm 20% 50V	27-157
1604 1380	Capacitor - 3.3 μ F 50V	27-158
1604 1381	Capacitor - 4.7 μ F 50V	27-159
1604 1383	Capacitor - 22 μ F 50V	27-160
1604 1386	Capacitor - 100 μ F \pm 20% 50V	27-161
1604 1390	Capacitor - 1000 μ F 50V	27-162

Part No.	Description	Page and Index No.
1605 0141	Capacitor - 4700pF 50V	27-163
1605 0145	Capacitor - 30pF 50V	27-164
1606 0658	Capacitor - 0.1 μ F 50V	27-165
1606 1348	Capacitor - 0.022 μ F 50V	27-166
1606 1451	Capacitor - 0.1 μ F 50V	27-167
1606 1452	Capacitor - 0.01 μ F 50V	27-168
1606 1455	capacitor - 470pF 25V	27-169
1607 0116	Ferrite Core	29-130
1610 0031	Resistor -47 OHM 1/8W	27-170
1610 0035	Resistor -100 OHM 1/8W \pm 5%	27-171
1610 0041	Resistor -180 OHM 1/8W \pm 5%	27-172
1610 0053	Resistor -1k OHM 1/8W \pm 5%	27-173
1610 0057	Resistor - 1.5k OHM 1/8W \pm 5%	27-174
1610 0060	Resistor - 2.0k OHM 1/8T \pm 5%	27-175
1610 0064	Resistor - 3k OHM 1/8W \pm 5%	27-176
1610 0067	Resistor - 4.7k OHM 1/8W \pm 5%	27-177
1610 0068	Resistor - 5.6k OHM 1/8W \pm 5%	27-178
1610 0070	Resistor - 8.2k OHM 1/8T \pm 5%	27-179
1610 0071	Resistor - 10k OHM \pm 5% 1/8W	27-180
1610 0073	Resistor - 12K OHM 1/8W \pm 5%	27-181
1610 0078	Resistor - 22k OHM 1/8W \pm 5%	27-182
1610 0079	Resistor - 22k OHM 1/8W \pm 5%	27-183
1610 0084	Resistor - 39k OHM 1/8W \pm 5%	27-184
1610 0085	Resistor - 47k OHM 1/8W \pm 5%	27-185
1610 0088	Resistor - 82k OHM 1/8W \pm 5%	27-186
1610 0089	Resistor - 100k OHM 1/8W \pm 5%	27-187
1610 0107	Resistor -1M OHM 1/8W \pm 5%	27-188
1610 0286	Capacitor - 100pF 50V \pm 10%	27-189
1611 4151	Resistor -150 OHM 1/4T \pm 5%	27-190
1611 4272	Resistor - 2.7k OHM 1/4T \pm 5%	27-191